

Abnormal Ear and Kernel Damage

Ear initiation begins in a corn plant at the V5 growth stage (five fully expanded leaves with the leaf collar visible). Plants subjected to environmental and agronomic stress during this critical period can have abnormally shaped ears, damaged kernels, or very few kernels. Stress factors can include drought, temperature extremes, saturated soil, nutrient deficiencies, disease or insect injury, and pesticide applications. The malformations can be a combination of stress factors; however, the type of malformation can help determine the cause and provide information for future management, if possible.

Many times, the malformations are not discovered until harvest. Determining the cause at harvest may be difficult because the causal factor, such as insect feeding, is likely no longer present. Weekly scouting during the growing season can help identify the cause when it is occurring or present. Environmental causes such as drought and hail damage are the result of Mother Nature and unavoidable. Agronomic causes such as pesticide application timing, compaction, and plant population are manageable.

Abnormal Ear and Kernel Damage Descriptions

Pinched Ears

Ear length is usually normal; however, a portion of the ear base may have 50% more rows than the remainder of the ear (Figure 1).¹ Kernel row number is determined during the V7 to V10 leaf collar stages with a doubling of the row number occurring about V9.¹ Severe stress during this growth period, particularly a late post-emergence application of an ALS (acetolactate synthase) herbicide can cause the kernel row number to be reduced from the point in time of the application. Sulfonylurea herbicide and organophosphate soil insecticide interactions may also be a cause.¹

Kernel row number at the base of each ear developed normally until an ALS herbicide was applied. The two ears on the right were affected more than the left two ears. This could be a result of the amount of herbicide absorbed by the plant.



Figure 1. Ears showing reduced kernel row number. Kernel row number at the base of each ear developed normally until an ALS herbicide was applied. The two ears on the right were affected more than the left two ears. This could be a result of the amount of herbicide absorbed by the plant.

Blunt Ear Syndrome

Also referred to as “beer can ears” or ear stunting. Characterized by reduced ear length, normal (for corn product) kernel rows at base of ear, and usually a barren ear tip (Figures 2, 3 and 4). The reduced kernel number suggests a biotic (living) or abiotic (non-living) stress occurred before ear size determination was complete. Possible causes include cold shock, a foliar fertilizer application, or a chemical application during the V8 to V12 (pre-tassel) growth stages of a late post-emergence herbicide (ALS, PGR (plant growth regulator), glufosinate, glyphosate), a fungicide (strobilurin), an insecticide, and spray adjuvants.² Research at Purdue University suggests

Abnormal Ear and Kernel Damage



Figure 2. Blunt ear syndrome.



Figure 3. Blunt ear syndrome ears.



Figure 4. Blunt ears caused by late applied fungicide application.



Figure 5. Poor kernel set resulting from drought stress



Figure 6. Poor ear fill from unidentified stress.



Figure 7. Poor kernel fill resulting from rootworm beetle silk clipping.

the syndrome can be caused by an application of a nonionic surfactant (NIS) prior to tasseling with or without a foliar fungicide.^{3,4} The greatest risk for occurrence appears to happen from V12 to V14 growth stages (about one to two weeks before pollination).⁴ Husks are slender and pointed which restricts silk emergence.

Incomplete Kernel Set

Characterized by ears with few and sporadic kernels. Causes can include uneven crop development, an inadequate supply of pollen during pollen shed and silking, severe drought, high temperatures, herbicide injury, and insect silk clipping (Figures 5, 6 and 7). Additionally, a phosphorus deficiency can interfere with pollination.¹

Zipper Ears

Characterized by partial or missing kernel rows on the underside of the ear due to kernel abortion (Figures 8 and 9). The missing rows can cause the ear to bend like a banana. The specific cause is unknown; however, suggested theories include drought stress, defoliation after pollination, high plant population,

and extensive covering of underside ear silks by upper ear silks that may block fertilization.¹ Pesticide misapplication may also be a cause.

Unfilled Ear Tips or Tip Dieback

Unfilled tips can be caused by poor silk fertilization which results in kernel abortion. Unfertilized ovules and aborted kernels may appear dried up and shrunk (Figure 10). Aborted kernels may have a yellow color (Figure 11).¹ Drought, nitrogen deficiency, high temperatures, foliar diseases, and cloudy weather during early kernel development may be potential causes.

Unfilled ear tips can be genetic as some corn products tend to have an unfilled tip. Additionally, ample moisture after pollination can cause the cob to lengthen beyond previously fertilized kernels (Figure 12).

Chaffy Ears

Characterized by ears with shrunk, lightweight kernels that have gaps between the kernels (Figure 13). Ears can be poorly filled. Premature plant death caused by frost, drought, disease, high temperatures,

Abnormal Ear and Kernel Damage

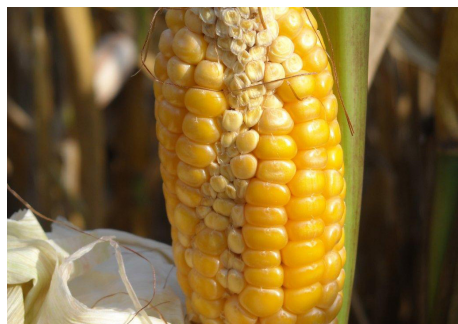


Figure 8. Zipper ear caused by drought stress.

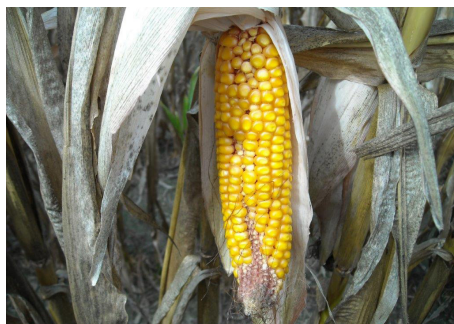


Figure 9. Zipper ear caused by drought stress.



Figure 10. Aborted ear tips.



Figure 11. Unfilled ear tip. Note the white and shriveled aborted ovules.



Figure 12. Unfilled corn tips from cob lengthening after pollination and ample rainfall.



Figure 13. Chaffy Ears.



Figure 14. Bouquet ears.

and insects are among the causes. Additionally, high plant population, severe potassium deficiency, and hail damage can be possible causes.¹

Drought Damaged Ears

Drought damaged ears have characteristics of other abnormal ear types. Tips can be unfilled, row numbers can be reduced, kernel set can be incomplete and scattered, kernels can be light in weight and chaffy, and ear size can range in size from very small (nubbin) to medium depending on when the drought event began. Other causes for nubbin ears can include nitrogen deficiency, and high plant populations.¹

Bouquet Ears

Characterized by several ears appearing on the same node (Figure 14). The cause may be related to heat stress during early ear formation and development (V5 to V15 growth stages) and the misapplication of pesticides (herbicides, fungicides, insecticides) prior to tasseling. Additionally, the apical dominance of the main ear may be lost causing multiple ears to form.⁵

Insect and Mite Injury

Insect (adults or larvae) and mite feeding on silks, kernels, and developing ears can cause ears to have missing kernels, bruised or damaged kernels, malformed ears, and reduced grain quality.

Silk feeding by corn rootworm beetles and Japanese beetles can cause ears to have missing kernels because of unsuccessful ovule fertilization (Figure 7).

Stink bugs pierce through the husk on immature ears and inject a toxin that causes the cob and husk to cease development on the pierced side. The other side continues to grow causing a hooked or banana shaped ear (Figure 15) to form. Exposed kernels from the reduced husk coverage become food for birds, other insects, and are exposed to environmental issues. Piercing through milk-stage ears can cause individual kernels to shrink, be discolored, and have feeding scars.¹

Direct feeding on corn ears by corn earworm, European corn borer, and Western bean cutworm can cause kernels to be highly damaged or missing (Figure 16).

Abnormal Ear and Kernel Damage



Figure 15. Curved ears caused by the injection of toxins by stink bugs on immature ears.



Figure 16. Ear tip damaged by corn earworm feeding. Fungal growth is present because of the initial feeding.



Figure 17. Kernel red streak caused by toxins released by wheat curl mites while feeding.



Figure 18. Kernel bruising from hail stones. Damaged kernels may be discolored and small, cease development, and/or become moldy.

Additionally, because of the damage, individual kernels or parts of the ear may develop kernel or ear rot.

Kernel red streak is a reddish discoloration of ear-tip (mostly) kernels caused by the secreted toxin of the wheat curl mite when feeding on the kernels (Figure 17). Coloration can vary by corn product and some corn products may have a genetic characteristic for reddish kernels.

Hail Damage

Hail can cause kernels to be bruised, discolored, missing, and have fungal growth. The amount of injury depends greatly on the state of kernel development at the time of the hail event and the size of the hail stone (Figure 18). Large hail stones can smash immature kernels and break the seed coat which allows the milk to flow onto surrounding kernels. The sugar content of the milk becomes a medium for fungal growth which can damage additional kernels. Hail damaged ears

may have a void of kernels where the hail stone hit (Figure 19).

Smut Ears

Smut can be found on any part of the corn plant throughout the growing season. Smut spores can enter corn tissues after injuries from hail, insects, and wind. The smut can completely engulf or partially cover an ear (Figure 20). Smut can also be found on “tassel ears” which are prone to develop on corn tillers (Figure 21).

Clear or Translucent Kernels

Characterized by random kernels with a clear liquid appearing among normal appearing kernels on a normal sized ear (Figure 22). The abnormal kernels collapse during kernel maturation leaving behind a shriveled shell. The syndrome has been attributed to a late glyphosate herbicide application.^{1,6}



Figure 19. Kernel void resulting from hail stone strike.



Figure 20. Common smut engulfing corn ear.



Figure 21. Common smut on tassel ear.



Figure 22. Clear or translucent kernels that are collapsing among kernels that are developing normally.

Picture courtesy of and used with the permission of Mike Weiss.

Abnormal Ear and Kernel Damage

Sources

¹Thomison, P., Lohnes, D., Geyer, A., and Thomison, M. Troubleshooting abnormal corn ears. The Ohio State University. <https://u.osu.edu/mastercorn/>.

²Nielsen, R.L. 2007. Symptomology of arrested ear development in corn. Corny News Network. Purdue University. <https://www.agry.purdue.edu/ext/corn/news/articles.07/arrestedears-0904.html>.

³Nielsen, R.L. (Bob), Wise, K., and Gerber, C. 2008. Arrested ears resulting from pre-tassel applications of pesticide & spray additive combinations. Corny News Network Articles. Purdue University. <https://www.agry.purdue.edu/ext/corn/news/articles.08/ArrestedEars-1209.html>.

⁴Stetzel, N., Wise, K., Nielsen, B., and Gerber, C. 2011. Arrested ear development in hybrid corn. Diseases of Corn. BP-85-W. Purdue Extension. Purdue University. <https://www.extension.purdue.edu/>.

⁵Elmore, R.W. and Abendroth, L.J. 2006. Multiple ears per node: Iowa 2006 situation & hypothesis. Integrated Crop Management. Iowa State University Extension and Outreach.

⁶Nafziger, E. 2010. "Bubble kernel" in corn. The Bulletin. University of Illinois. <http://bulletin.ipm.illinois.edu/article.php?id=1387>.

⁷Thomison, P. and Geyer, A. 2015. Abnormal corn ears (poster). ACE-1-15. The Ohio State University Extension.

Web sources verified 8/2/21.

Legal Statement

ALWAYS READ AND FOLLOW PESTICIDE LABEL DIRECTIONS. Performance may vary, from location to location and from year to year, as local growing, soil and weather conditions may vary. Growers should evaluate data from multiple locations and years whenever possible and should consider the impacts of these conditions on the grower's fields.

Tank mixtures: The applicable labeling for each product must be in the possession of the user at the time of application. Follow applicable use instructions, including application rates, precautions and restrictions of each product used in the tank mixture. Not all tank mix product formulations have been tested for compatibility or performance other than specifically listed by brand name. Always predetermine the compatibility of tank mixtures by mixing small proportional quantities in advance. Bayer and Bayer Cross are registered trademarks of Bayer Group. All other trademarks are the property of their respective owners. ©2021 Bayer Group. All rights reserved. 7005_S7.