



# Corn Gray Leaf Spot Risk Forecast

For period of July 4 – Aug 2, Date of Issue: July 5, 2020

## One-Month Weather Outlook

Over the next 30 days temperatures are expected to be higher than normal for the entire Corn Belt. Precipitation amounts will be lower than normal for the southwest and northeast corners of the map, with the remainder normal to above normal. During the next two weeks temperatures will be higher than normal. Precipitation will be normal or higher for regions north of I-90, and below normal for areas south of I-90.

## Gray Leaf Spot Risk Summary

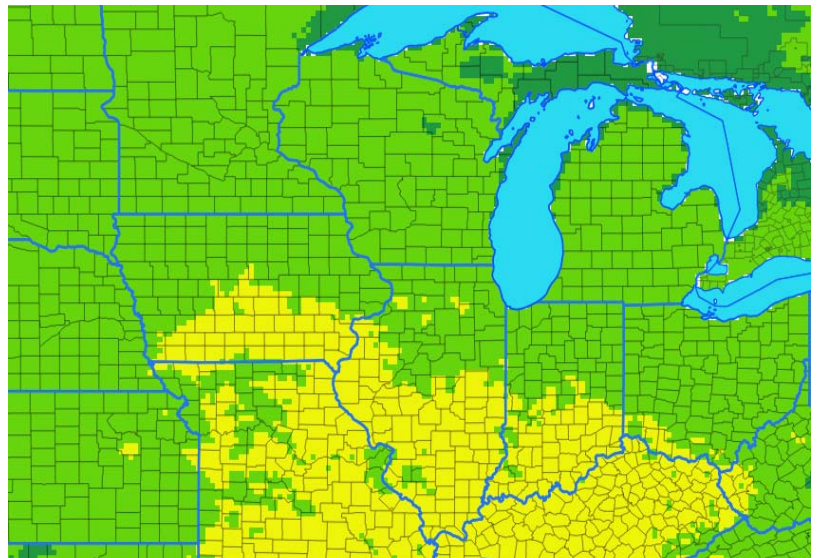
The risk for gray leaf spot remains low to moderate in the Corn Belt at this time.

## Next two-week risk interpretation

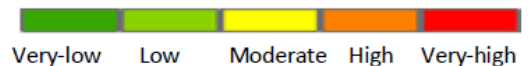
Conditions during the next two weeks are moderately favorable for the development of GLS in MO, KY, and the southern parts of IA, IL, and IN. In regions of yellow, some level of infections are likely to occur on the lower portions of the corn plants, especially in spots with heavy crop residue. Scout susceptible hybrids in regions of yellow.



ONE-MONTH RISK MAP



Risk Level



## WHAT TO DO?

<b>HIGH</b>	Treat susceptible hybrids and weigh risk factors for other fields
<b>MODERATE</b>	Scout fields and treat as conditions warrant
<b>LOW OR VERY LOW</b>	Monitor risk forecasts

## DISCLAIMER

The forecast herein is made with state of the art computer modeling technology. However, the models do not guarantee accuracy or certainty of information because of the uncertainty in climate forecast which is used in disease modeling and because of environmental variation. We specifically disclaim all warranties expressed or implied with respect to the use of this information. **ALWAYS READ AND FOLLOW PESTICIDE LABEL DIRECTIONS.** Bayer, Bayer Cross and Delaro® are registered trademarks of Bayer Group. For additional product information call toll-free 1-866-99-BAYER (1-866-992-2937) or visit our website at [www.BayerCropScience.us](http://www.BayerCropScience.us). Bayer CropScience LP, 800 North Lindbergh Boulevard, St. Louis, MO 63167. ©2020 Bayer Group. All rights reserved.





# Northern Corn Leaf Blight Risk Forecast

For period of July 4 – Aug 2, Date of Issue: July 5, 2020

## One-Month Weather Outlook

Over the next 30 days temperatures are expected to be higher than normal for the entire Corn Belt. Precipitation amounts will be lower than normal for the southwest and northeast corners of the map, with the remainder normal to above normal. During the next two weeks temperatures will be higher than normal. Precipitation will be normal or higher for regions north of I-90, and below normal for areas south of I-90.

## Northern Leaf Blight Risk Summary

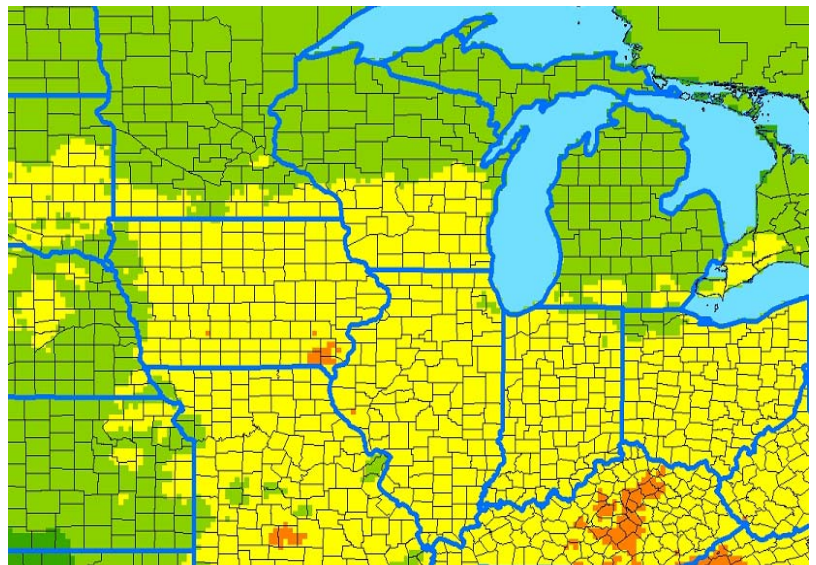
The risk of northern leaf blight is moderate for most of the Corn Belt.

## Next two-week risk interpretation

During the next two weeks NCLB risk is moderate across the Corn Belt, with some pockets at high risk. In areas of yellow, low to moderate levels of infection are likely to occur. Scout corn fields in areas of yellow, especially late-planted fields. Risk can be higher in fields with a corn-corn rotation, or had NCLB damage previously.



## ONE-MONTH RISK MAP



Risk Level  Very-low  Low  Moderate  High  Very-high

WHAT TO DO?	
<b>HIGH</b>	Treat susceptible hybrids and weigh risk factors for other fields
<b>MODERATE</b>	Scout fields and treat as conditions warrant
<b>LOW OR VERY LOW</b>	Monitor risk forecasts

### DISCLAIMER

The forecast herein is made with state of the art computer modeling technology. However, the models do not guarantee accuracy or certainty of information because of the uncertainty in climate forecast which is used in disease modeling and because of environmental variation. We specifically disclaim all warranties expressed or implied with respect to the use of this information. . **ALWAYS READ AND FOLLOW PESTICIDE LABEL DIRECTIONS.** Bayer, Bayer Cross and Delaro® are registered trademarks of Bayer Group. For additional product information call toll-free 1-866-99-BAYER (1-866-992-2937) or visit our website at [www.BayerCropScience.us](http://www.BayerCropScience.us). Bayer CropScience LP, 800 North Lindbergh Boulevard, St. Louis, MO 63167. ©2020 Bayer Group. All rights reserved.





# Corn Southern Rust Risk Forecast

For period of July 4 – Aug 2, Date of Issue: July 5, 2020

## One-Month Weather Outlook

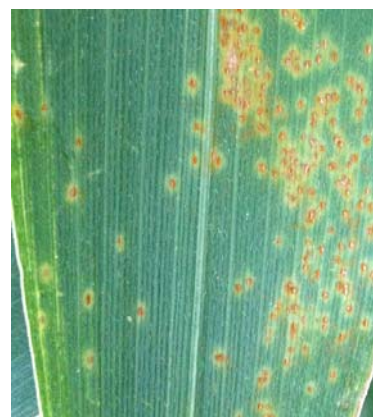
Over the next 30 days temperatures are expected to be higher than normal for the entire Corn Belt. Precipitation amounts will be lower than normal for the southwest and northeast corners of the map, with the remainder normal to above normal. During the next two weeks temperatures will be higher than normal. Precipitation will be normal or higher for regions north of I-90, and below normal for areas south of I-90.

## Southern Rust Risk Summary

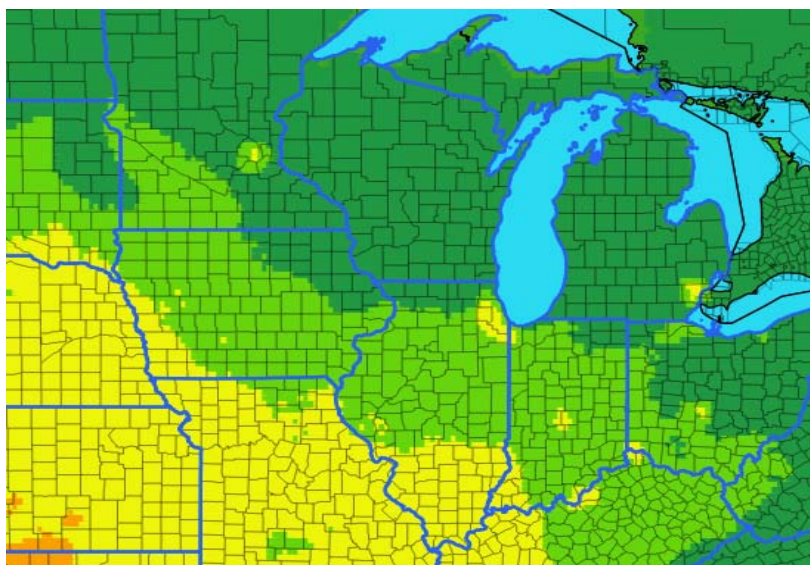
The risk of southern corn rust is at similar levels to the previous forecast at this time.

## Next 2-week risk interpretation

Conditions are moderately favorable to the occurrence of southern rust in the southwestern areas (yellow). In areas of yellow, low levels of infection are to be found next two weeks. Spray if SCR is detected or reported nearby, as the disease started early in the South this season.



ONE-MONTH RISK MAP



Risk Level       
 Very-low Low Moderate High Very-high

WHAT TO DO?	
<b>HIGH</b>	Treat susceptible hybrids and weigh risk factors for other fields
<b>MODERATE</b>	Scout fields and treat as conditions warrant
<b>LOW OR VERY LOW</b>	Monitor risk forecasts

### DISCLAIMER

The forecast herein is made with state of the art computer modeling technology. However, the models do not guarantee accuracy or certainty of information because of the uncertainty in climate forecast which is used in disease modeling and because of environmental variation. We specifically disclaim all warranties expressed or implied with respect to the use of this information. **ALWAYS READ AND FOLLOW PESTICIDE LABEL DIRECTIONS.** Bayer, Bayer Cross and Delaro® are registered trademarks of Bayer Group. For additional product information call toll-free 1-866-99-BAYER (1-866-992-2937) or visit our website at [www.BayerCropScience.us](http://www.BayerCropScience.us). Bayer CropScience LP, 800 North Lindbergh Boulevard, St. Louis, MO 63167. ©2020 Bayer Group. All rights reserved.





# Corn Common Rust Risk Forecast

For period of July 4 – Aug 2, Date of Issue: July 5, 2020

## One-Month Weather Outlook

Over the next 30 days temperatures are expected to be higher than normal for the entire Corn Belt. Precipitation amounts will be lower than normal for the southwest and northeast corners of the map, with the remainder normal to above normal. During the next two weeks temperatures will be higher than normal. Precipitation will be normal or higher for regions north of I-90, and below normal for areas south of I-90.



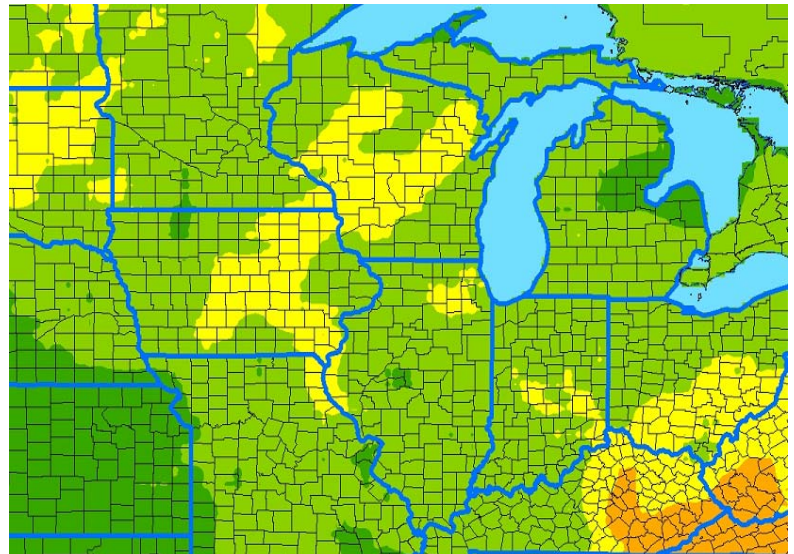
## Common Rust Risk Summary

The risk of corn common rust is light to moderate across most of the Corn Belt.

### Risk interpretation

Common rust risk is low for much of the Corn Belt, but moderate or high in some areas. In areas of orange, consider treating susceptible hybrids. In areas of yellow, conditions are moderately favorable for the disease and infected leaves will be found on the lower and middle leaves of the plants. Scout areas of yellow.

## ONE-MONTH RISK MAP



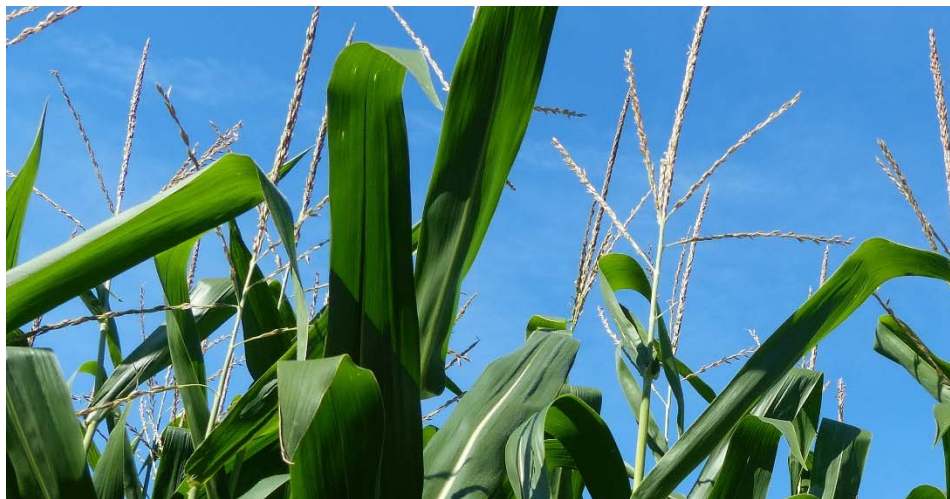
WHAT TO DO?	
<b>HIGH</b>	Treat susceptible hybrids and weigh risk factors for other fields
<b>MODERATE</b>	Scout fields and treat as conditions warrant
<b>LOW OR VERY LOW</b>	Monitor risk forecasts



### DISCLAIMER

The forecast herein is made with state of the art computer modeling technology. However, the models do not guarantee accuracy or certainty of information because of the uncertainty in climate forecast which is used in disease modeling and because of environmental variation. We specifically disclaim all warranties expressed or implied with respect to the use of this information. **ALWAYS READ AND FOLLOW PESTICIDE LABEL DIRECTIONS.** Bayer, Bayer Cross and Delaro® are registered trademarks of Bayer Group. For additional product information call toll-free 1-866-99-BAYER (1-866-992-2937) or visit our website at [www.BayerCropScience.us](http://www.BayerCropScience.us). Bayer CropScience LP, 800 North Lindbergh Boulevard, St. Louis, MO 63167. ©2020 Bayer Group. All rights reserved.





# Corn Tar Spot Risk Forecast

For period of July 4 – Aug 2, Date of Issue: July 5, 2020

## One-Month Weather Outlook

Over the next 30 days temperatures are expected to be higher than normal for the entire Corn Belt. Precipitation amounts will be lower than normal for the southwest and northeast corners of the map, with the remainder normal to above normal. During the next two weeks temperatures will be higher than normal. Precipitation will be normal or higher for regions north of I-90, and below normal for areas south of I-90.

## Corn Tar Spot Risk Summary

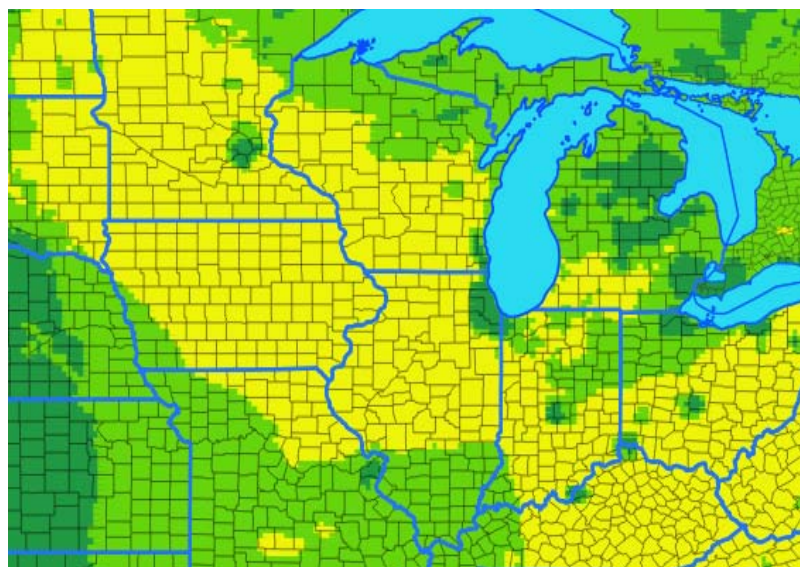
The weather conditions remains moderately suitable to tar spot for much of the Corn Belt.

## Next two-week risk interpretation

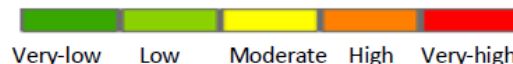
In areas of yellow, scout fields where the disease was reported in past seasons. There is a window favorable to the development of tar spot. The earlier in the summer that the disease appears, the greater the risk of yield impact later in the summer.



ONE-MONTH RISK MAP



Risk Level



## WHAT TO DO?

<b>HIGH</b>	Treat at the first sign of infection in your fields or the disease is developing in neighboring fields
<b>MODERATE</b>	Scout fields and treat as conditions warrant
<b>LOW OR VERY LOW</b>	Monitor risk forecasts

### DISCLAIMER

The forecast herein is made with state of the art computer modeling technology. However, the models do not guarantee accuracy or certainty of information because of the uncertainty in climate forecast which is used in disease modeling and because of environmental variation. We specifically disclaim all warranties expressed or implied with respect to the use of this information. **ALWAYS READ AND FOLLOW PESTICIDE LABEL DIRECTIONS.** Bayer, Bayer Cross and Delaro® are registered trademarks of Bayer Group. For additional product information call toll-free 1-866-99-BAYER (1-866-992-2937) or visit our website at [www.BayerCropScience.us](http://www.BayerCropScience.us). Bayer CropScience LP, 800 North Lindbergh Boulevard, St. Louis, MO 63167. ©2020 Bayer Group. All rights reserved.

