



# Corn Gray Leaf Spot Risk Forecast

For period of June 12 – July 10, Date of Issue: June 13, 2021

## One-Month Weather Outlook

Over the next 30 days temperatures will be in normal ranges along with normal precipitation for most of the Corn Belt. During the next two weeks temperatures will be near normal except for northern MN and ND where it will be cooler than average. Above average precipitation is predicted in most sections of the Corn Belt.

## Gray Leaf Spot Risk Summary

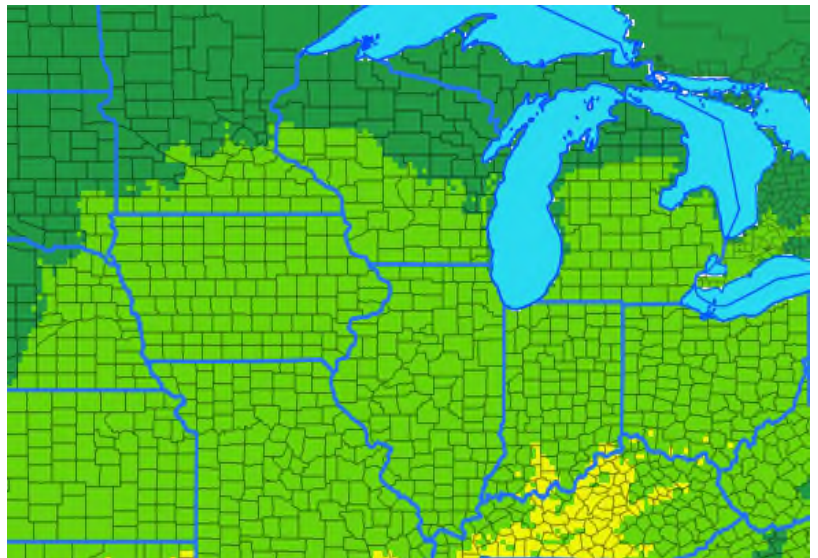
The risk for gray leaf spot in the Corn Belt is low except for the western half of Kentucky.

## Next two-week risk interpretation

Conditions over the next two weeks are generally unfavorable for the development of gray leaf spot in the Corn Belt. In western parts of KY (in yellow), conditions are moderately suitable to GLS and disease may be found on lower leaves of early-planted corn.



ONE-MONTH RISK MAP



WHAT TO DO?	
<b>HIGH</b>	Treat susceptible hybrids and weigh risk factors for other fields
<b>MODERATE</b>	Scout fields and treat as conditions warrant
<b>LOW OR VERY LOW</b>	Monitor risk forecasts

Risk Level



**DISCLAIMER**

The forecast herein is made with state of the art computer modeling technology. However, the models do not guarantee accuracy or certainty of information because of the uncertainty in climate forecast which is used in disease modeling and because of environmental variation. We specifically disclaim all warranties expressed or implied with respect to the use of this information. . **ALWAYS READ AND FOLLOW PESTICIDE LABEL DIRECTIONS.** Bayer, Bayer Cross and Delaro® are registered trademarks of Bayer Group. For additional product information call toll-free 1-866-99-BAYER (1-866-992-2937) or visit our website at [www.BayerCropScience.us](http://www.BayerCropScience.us). Bayer CropScience LP, 800 North Lindbergh Boulevard, St. Louis, MO 63167. ©2020 Bayer Group. All rights reserved.



**RESTRICTED**





**DELARO**<sup>®</sup>  
Complete  
458 SC Fungicide

# Northern Corn Leaf Blight Risk Forecast

For period of June 12 – July 10, Date of Issue: June 13, 2021

## One-Month Weather Outlook

Over the next 30 days temperatures will be in normal ranges along with normal precipitation for most of the Corn Belt. During the next two weeks temperatures will be near normal except for northern MN and ND where it will be cooler than average. Above average precipitation is predicted in most sections of the Corn Belt.

## Northern Leaf Blight Risk Summary

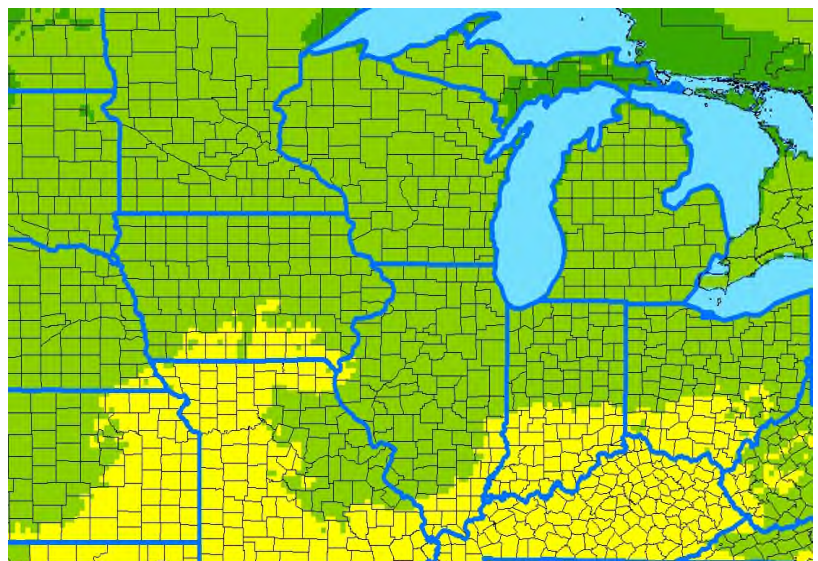
The risk of northern corn leaf blight is moderate in many southern areas of the Corn Belt.

## Next two-week risk interpretation

The risk of NCLB is low in the north and moderate in many southern parts of the Corn Belt. In areas of yellow, scout fields as the crop enters reproductive stages, especially on susceptible hybrids. Consider spraying if NCLB is detected, especially in fields with a history of NCLB damage.



ONE-MONTH RISK MAP



Risk Level

Very-low Low Moderate High

WHAT TO DO?	
<b>HIGH</b>	Treat susceptible hybrids and weigh risk factors for other fields
<b>MODERATE</b>	Scout fields and treat as conditions warrant
<b>LOW OR VERY LOW</b>	Monitor risk forecasts

### DISCLAIMER

The forecast herein is made with state of the art computer modeling technology. However, the models do not guarantee accuracy or certainty of information because of the uncertainty in climate forecast which is used in disease modeling and because of environmental variation. We specifically disclaim all warranties expressed or implied with respect to the use of this information. . **ALWAYS READ AND FOLLOW PESTICIDE LABEL DIRECTIONS.** Bayer, Bayer Cross and Delaro<sup>®</sup> are registered trademarks of Bayer Group. For additional product information call toll-free 1-866-99-BAYER (1-866-992-2937) or visit our website at [www.BayerCropScience.us](http://www.BayerCropScience.us). Bayer CropScience LP, 800 North Lindbergh Boulevard, St. Louis, MO 63167. ©2020 Bayer Group. All rights reserved.



**RESTRICTED**





**DELARO**<sup>®</sup>  
*Complete*  
 458 SC Fungicide

# Corn Southern Rust Risk Forecast

For period of June 12 – July 10, Date of Issue: June 13, 2021

## One-Month Weather Outlook

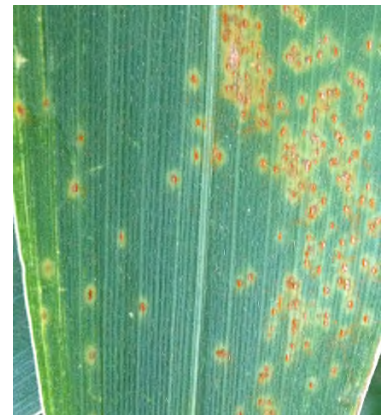
Over the next 30 days temperatures will be in normal ranges along with normal precipitation for most of the Corn Belt. During the next two weeks temperatures will be near normal except for northern MN and ND where it will be cooler than average. Above average precipitation is predicted in most sections of the Corn Belt.

## Southern Rust Risk Summary

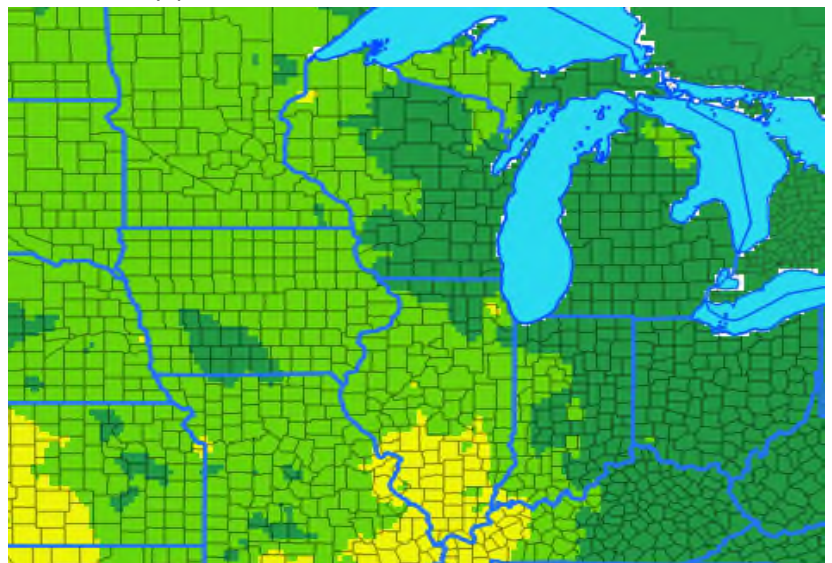
The risk of southern rust is low in the Corn Belt, but CSR is beginning to move.

## Next 2-week risk interpretation

The disease has moved into some southern region of the Corn Belt. During the next two weeks the weather conditions will be generally unfavorable to the disease except for the areas in yellow. In those areas scout early-planted corn and treat if the disease is found.



ONE-MONTH RISK MAP



Risk Level



## WHAT TO DO?

<b>HIGH</b>	Treat susceptible hybrids and weigh risk factors for other fields
<b>MODERATE</b>	Scout fields and treat as conditions warrant
<b>LOW OR VERY LOW</b>	Monitor risk forecasts

### DISCLAIMER

The forecast herein is made with state of the art computer modeling technology. However, the models do not guarantee accuracy or certainty of information because of the uncertainty in climate forecast which is used in disease modeling and because of environmental variation. We specifically disclaim all warranties expressed or implied with respect to the use of this information. . **ALWAYS READ AND FOLLOW PESTICIDE LABEL DIRECTIONS.** Bayer, Bayer Cross and Delaro<sup>®</sup> are registered trademarks of Bayer Group. For additional product information call toll-free 1-866-99-BAYER (1-866-992-2937) or visit our website at [www.BayerCropScience.us](http://www.BayerCropScience.us). Bayer CropScience LP, 800 North Lindbergh Boulevard, St. Louis, MO 63167. ©2020 Bayer Group. All rights reserved.



**RESTRICTED**





# Corn Common Rust Risk Forecast

For period of June 12 – July 10, Date of Issue: June 13, 2021

## One-Month Weather Outlook

Over the next 30 days temperatures will be in normal ranges along with normal precipitation for most of the Corn Belt. During the next two weeks temperatures will be near normal except for northern MN and ND where it will be cooler than average. Above average precipitation is predicted in most sections of the Corn Belt.

## Common Rust Risk Summary

The risk of corn common rust continues to increase for the southern regions of the Corn Belt.

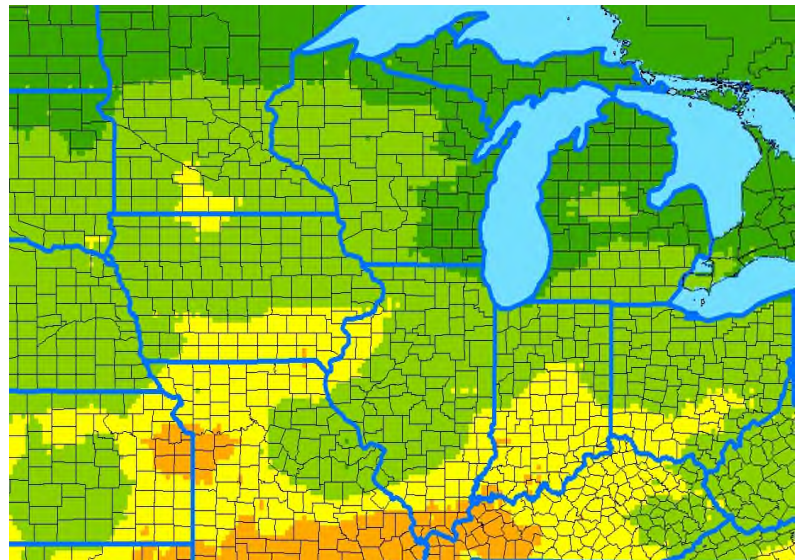
## Risk interpretation

During the next two weeks the risk of this disease is moderate to high in the southern areas of the risk map. In regions of orange, consider treatment if the disease is found on susceptible hybrids. In area of yellow, scout susceptible hybrids that are soon to enter reproductive stages.



ONE-MONTH RISK MAP

WHAT TO DO?	
<b>HIGH</b>	Treat susceptible hybrids and weigh risk factors for other fields
<b>MODERATE</b>	Scout fields and treat as conditions warrant
<b>LOW OR VERY LOW</b>	Monitor risk forecasts



Risk Level



**DISCLAIMER**

The forecast herein is made with state of the art computer modeling technology. However, the models do not guarantee accuracy or certainty of information because of the uncertainty in climate forecast which is used in disease modeling and because of environmental variation. We specifically disclaim all warranties expressed or implied with respect to the use of this information. **ALWAYS READ AND FOLLOW PESTICIDE LABEL DIRECTIONS.** Bayer, Bayer Cross and Delaro® are registered trademarks of Bayer Group. For additional product information call toll-free 1-866-99-BAYER (1-866-992-2937) or visit our website at [www.BayerCropScience.us](http://www.BayerCropScience.us). Bayer CropScience LP, 800 North Lindbergh Boulevard, St. Louis, MO 63167. ©2020 Bayer Group. All rights reserved.



**RESTRICTED**





**DELARO**<sup>®</sup>  
*Complete*  
 458 SC Fungicide

# Corn Tar Spot Risk Forecast

For period of June 12 – July 10, Date of Issue: June 13, 2021

## One-Month Weather Outlook

Over the next 30 days temperatures will be in normal ranges along with normal precipitation for most of the Corn Belt. During the next two weeks temperatures will be near normal except for northern MN and ND where it will be cooler than average. Above average precipitation is predicted in most sections of the Corn Belt.

## Corn Tar Spot Risk Summary

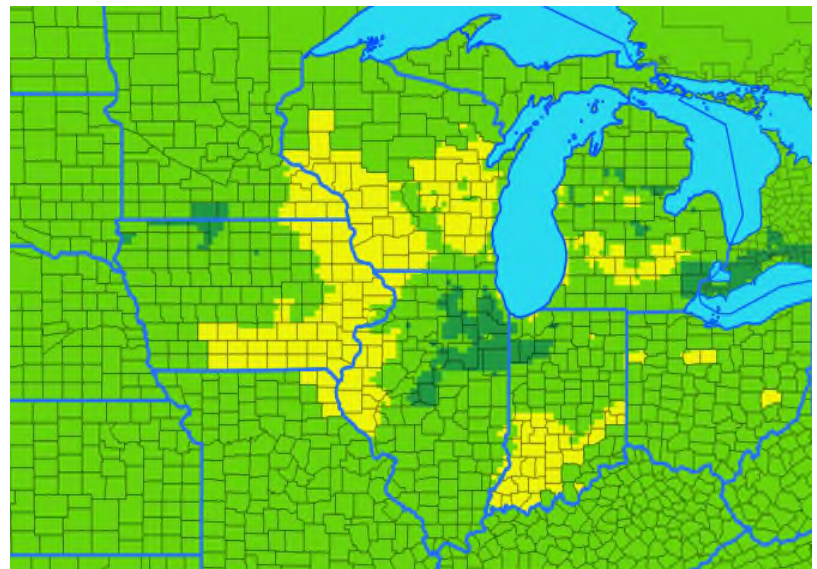
The risk of corn tar spot in the Corn Belt is moderate in some areas of the Corn Belt.

## Next two-week risk interpretation

Weather conditions are moderately favorable to tar spot infections in some areas (yellow) in the next two weeks, and low levels of infection may be discovered. Scout fields which had tar spot previously, especially no-till fields. Infections at early stages are the source of inoculum for damage later in the summer.



ONE-MONTH RISK MAP



Risk Level



Very-low Low Moderate High

## WHAT TO DO?

<b>HIGH</b>	Treat at the first sign of infection in your fields or the disease is developing in neighboring fields
<b>MODERATE</b>	Scout fields and treat as conditions warrant
<b>LOW OR VERY LOW</b>	Monitor risk forecasts

### DISCLAIMER

The forecast herein is made with state of the art computer modeling technology. However, the models do not guarantee accuracy or certainty of information because of the uncertainty in climate forecast which is used in disease modeling and because of environmental variation. We specifically disclaim all warranties expressed or implied with respect to the use of this information. . **ALWAYS READ AND FOLLOW PESTICIDE LABEL DIRECTIONS.** Bayer, Bayer Cross and Delaro<sup>®</sup> are registered trademarks of Bayer Group. For additional product information call toll-free 1-866-99-BAYER (1-866-992-2937) or visit our website at [www.BayerCropScience.us](http://www.BayerCropScience.us). Bayer CropScience LP, 800 North Lindbergh Boulevard, St. Louis, MO 63167. ©2020 Bayer Group. All rights reserved.



**RESTRICTED**