



**DELARO**<sup>®</sup>  
*Complete*  
 458 SC Fungicide

# Corn Gray Leaf Spot Risk Forecast

For period of July 10 – Aug 8, Date of Issue: July 11, 2021

## One-Month Weather Outlook

The next 30 days will be warmer and drier than normal for the northern parts of the Corn Belt, and generally normal for the southern parts. During the next two weeks temperatures will be cooler than normal with higher than normal precipitation for areas south of I-80. North of I-80 it will be warmer and dryer than normal except for the northeastern areas.

## Gray Leaf Spot Risk Summary

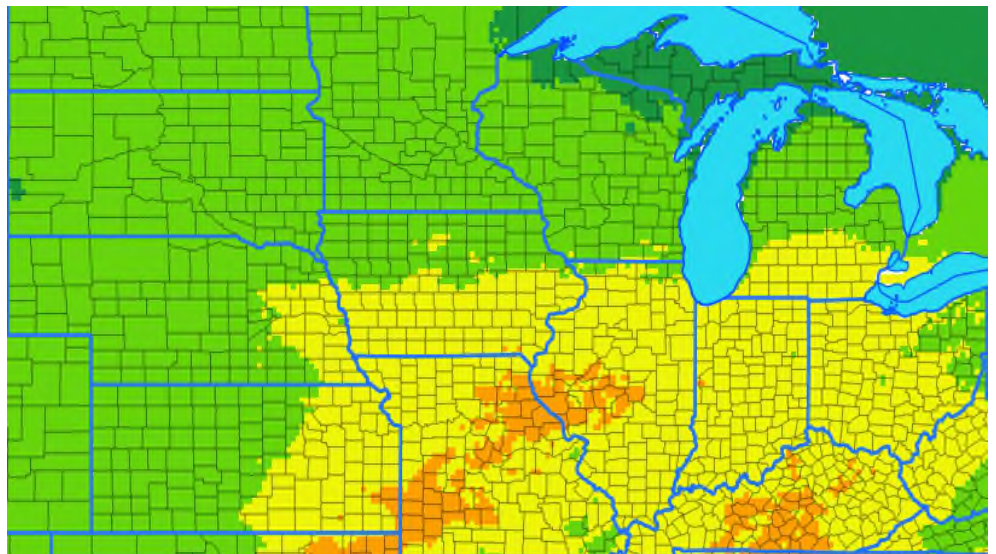
The risk for gray leaf spot in the Corn Belt has increased in the southern and central areas of the forecast map.

## Next two-week risk interpretation

Weather conditions are moderately favorable to GLS in areas south of I-80 for the next two weeks (yellow) with some high risk spots. In these areas GLS may be found in the lower and middle canopy. Scout susceptible hybrids, especially on corn-corn ground. Consider treatment if GLS is found on the middle portion of the plants or higher.



ONE-MONTH RISK MAP



Risk Level



## WHAT TO DO?

<b>HIGH</b>	Treat susceptible hybrids and weigh risk factors for other fields
<b>MODERATE</b>	Scout fields and treat as conditions warrant
<b>LOW OR VERY LOW</b>	Monitor risk forecasts

### DISCLAIMER

The forecast herein is made with state of the art computer modeling technology. However, the models do not guarantee accuracy or certainty of information because of the uncertainty in climate forecast which is used in disease modeling and because of environmental variation. We specifically disclaim all warranties expressed or implied with respect to the use of this information. **ALWAYS READ AND FOLLOW PESTICIDE LABEL DIRECTIONS.** Bayer, Bayer Cross and Delaro<sup>®</sup> are registered trademarks of Bayer Group. For additional product information call toll-free 1-866-99-BAYER (1-866-992-2937) or visit our website at [www.BayerCropScience.us](http://www.BayerCropScience.us). Bayer CropScience LP, 800 North Lindbergh Boulevard, St. Louis, MO 63167. ©2020 Bayer Group. All rights reserved.



**RESTRICTED**





**DELARO**<sup>®</sup>  
*Complete*  
 458 SC Fungicide

# Northern Corn Leaf Blight Risk Forecast

For period of July 10 – Aug 8, Date of Issue: July 11, 2021

## One-Month Weather Outlook

The next 30 days will be warmer and drier than normal for the northern parts of the Corn Belt, and generally normal for the southern parts. During the next two weeks temperatures will be cooler than normal with higher than normal precipitation for areas south of I-80. North of I-80 it will be warmer and dryer than normal except for the northeastern areas.

## Northern Leaf Blight Risk Summary

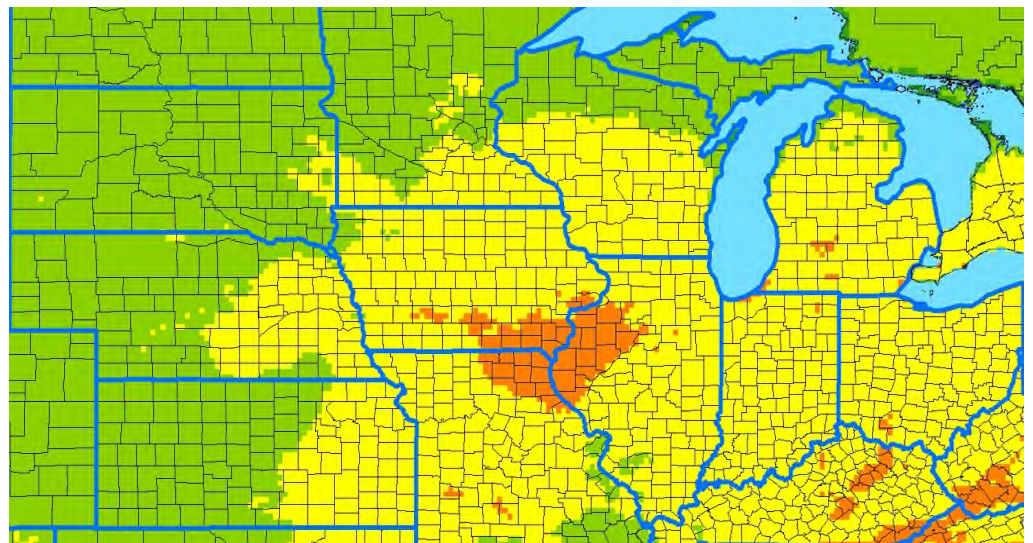
The risk of northern corn leaf blight continues to increase in the Corn Belt.

## Next two-week risk interpretation

The risk of NCLB will continue to increase in the Corn Belt for the next two weeks. Consider spraying at R1, especially if NCLB is detected on the middle leaves or higher on susceptible hybrids. Pay attention to fields with a history of NCLB infections in prior years.



ONE-MONTH RISK MAP



Risk Level



WHAT TO DO?	
<b>HIGH</b>	Treat susceptible hybrids and weigh risk factors for other fields
<b>MODERATE</b>	Scout fields and treat as conditions warrant
<b>LOW OR VERY LOW</b>	Monitor risk forecasts

**DISCLAIMER**

The forecast herein is made with state of the art computer modeling technology. However, the models do not guarantee accuracy or certainty of information because of the uncertainty in climate forecast which is used in disease modeling and because of environmental variation. We specifically disclaim all warranties expressed or implied with respect to the use of this information. . **ALWAYS READ AND FOLLOW PESTICIDE LABEL DIRECTIONS.** Bayer, Bayer Cross and Delaro<sup>®</sup> are registered trademarks of Bayer Group. For additional product information call toll-free 1-866-99-BAYER (1-866-992-2937) or visit our website at [www.BayerCropScience.us](http://www.BayerCropScience.us). Bayer CropScience LP, 800 North Lindbergh Boulevard, St. Louis, MO 63167. ©2020 Bayer Group. All rights reserved.



**RESTRICTED**





# Corn Southern Rust Risk Forecast

For period of July 10 – Aug 8, Date of Issue: July 11, 2021

## One-Month Weather Outlook

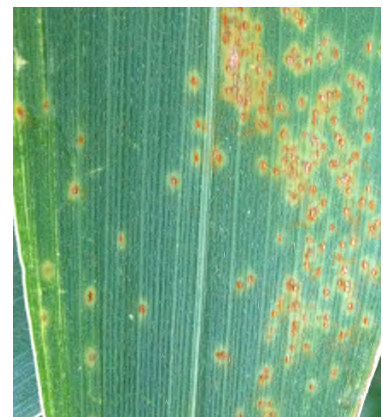
The next 30 days will be warmer and drier than normal for the northern parts of the Corn Belt, and generally normal for the southern parts. During the next two weeks temperatures will be cooler than normal with higher than normal precipitation for areas south of I-80. North of I-80 it will be warmer and dryer than normal except for the northeastern areas.

## Southern Rust Risk Summary

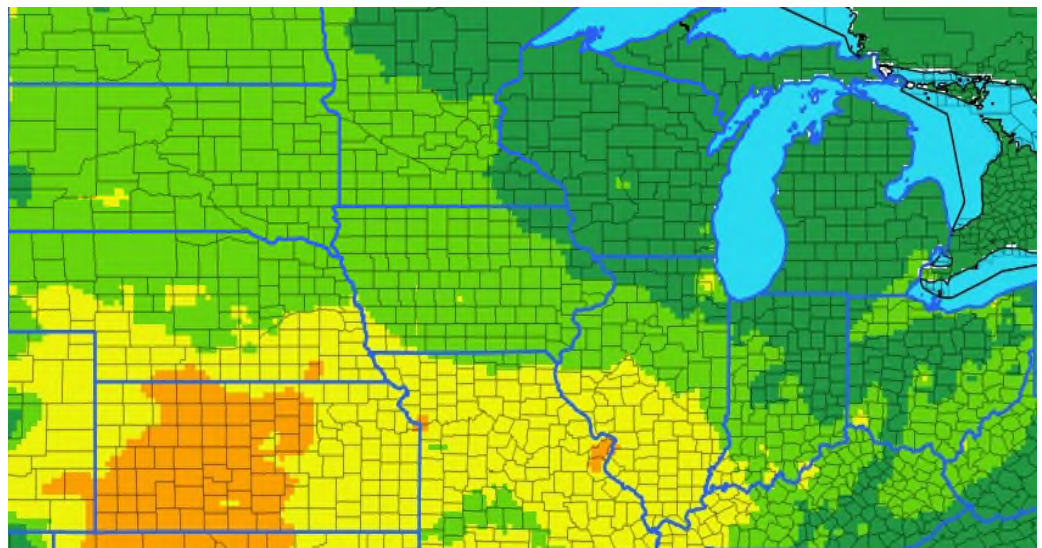
The risk of southern corn rust is moderate to high in the southwestern quarter of the forecast map.

## Next 2-week risk interpretation

During the next two weeks more diseased plants will be found in regions of yellow and orange. Where infections are discovered or reported in neighboring fields, treat susceptible and vulnerable hybrids.



ONE-MONTH RISK MAP



Risk Level



Very-low Low Moderate High

WHAT TO DO?	
<b>HIGH</b>	Treat susceptible hybrids and weigh risk factors for other fields
<b>MODERATE</b>	Scout fields and treat as conditions warrant
<b>LOW OR VERY LOW</b>	Monitor risk forecasts

**DISCLAIMER**

The forecast herein is made with state of the art computer modeling technology. However, the models do not guarantee accuracy or certainty of information because of the uncertainty in climate forecast which is used in disease modeling and because of environmental variation. We specifically disclaim all warranties expressed or implied with respect to the use of this information. **ALWAYS READ AND FOLLOW PESTICIDE LABEL DIRECTIONS.** Bayer, Bayer Cross and Delaro® are registered trademarks of Bayer Group. For additional product information call toll-free 1-866-99-BAYER (1-866-992-2937) or visit our website at [www.BayerCropScience.us](http://www.BayerCropScience.us). Bayer CropScience LP, 800 North Lindbergh Boulevard, St. Louis, MO 63167. ©2020 Bayer Group. All rights reserved.



**RESTRICTED**





# Corn Common Rust Risk Forecast

For period of July 10 – Aug 8, Date of Issue: July 11, 2021

## One-Month Weather Outlook

The next 30 days will be warmer and drier than normal for the northern parts of the Corn Belt, and generally normal for the southern parts. During the next two weeks temperatures will be cooler than normal with higher than normal precipitation for areas south of I-80. North of I-80 it will be warmer and dryer than normal except for the northeastern areas.

## Common Rust Risk Summary

The risk of corn common rust is moderate to high for the eastern Corn Belt.

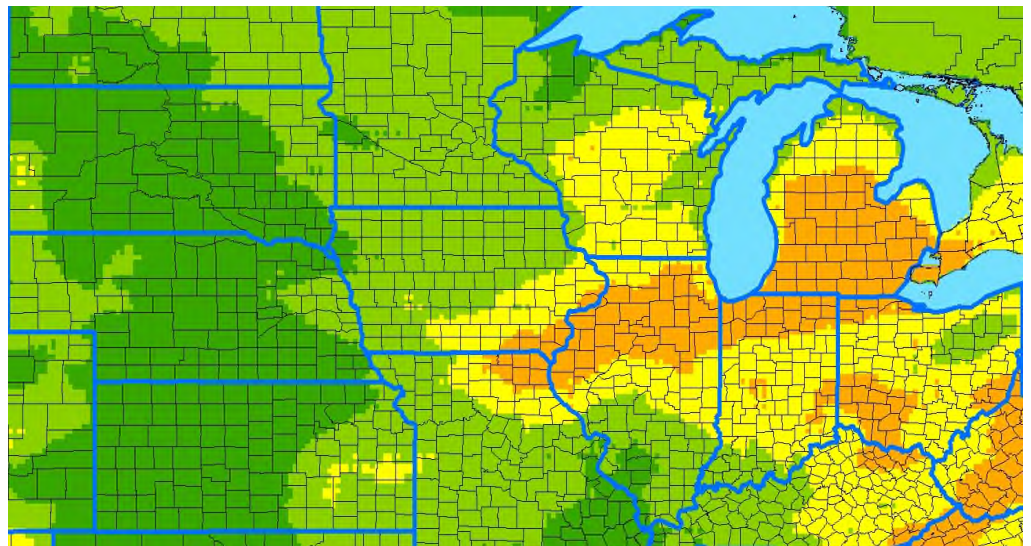
### Risk interpretation

For the next two weeks conditions are moderately favorable for this disease generally east of the Mississippi River. In region of orange or yellow, treat vulnerable hybrids if lesions are detected on middle or upper leaves.



ONE-MONTH RISK MAP

WHAT TO DO?	
<b>HIGH</b>	Treat susceptible hybrids and weigh risk factors for other fields
<b>MODERATE</b>	Scout fields and treat as conditions warrant
<b>LOW OR VERY LOW</b>	Monitor risk forecasts



Risk Level



**DISCLAIMER**

The forecast herein is made with state of the art computer modeling technology. However, the models do not guarantee accuracy or certainty of information because of the uncertainty in climate forecast which is used in disease modeling and because of environmental variation. We specifically disclaim all warranties expressed or implied with respect to the use of this information. **ALWAYS READ AND FOLLOW PESTICIDE LABEL DIRECTIONS.** Bayer, Bayer Cross and Delaro® are registered trademarks of Bayer Group. For additional product information call toll-free 1-866-99-BAYER (1-866-992-2937) or visit our website at [www.BayerCropScience.us](http://www.BayerCropScience.us). Bayer CropScience LP, 800 North Lindbergh Boulevard, St. Louis, MO 63167. ©2020 Bayer Group. All rights reserved.



**RESTRICTED**





**DELARO**<sup>®</sup>  
*Complete*  
 458 SC Fungicide

# Corn Tar Spot Risk Forecast

For period of July 10 – Aug 8, Date of Issue: July 11, 2021

## One-Month Weather Outlook

The next 30 days will be warmer and drier than normal for the northern parts of the Corn Belt, and generally normal for the southern parts. During the next two weeks temperatures will be cooler than normal with higher than normal precipitation for areas south of I-80. North of I-80 it will be warmer and dryer than normal except for the northeastern areas.

## Corn Tar Spot Risk Summary

The risk of corn tar spot in the Corn Belt has increased in areas where the disease was present in previous seasons.

## Next two-week risk interpretation

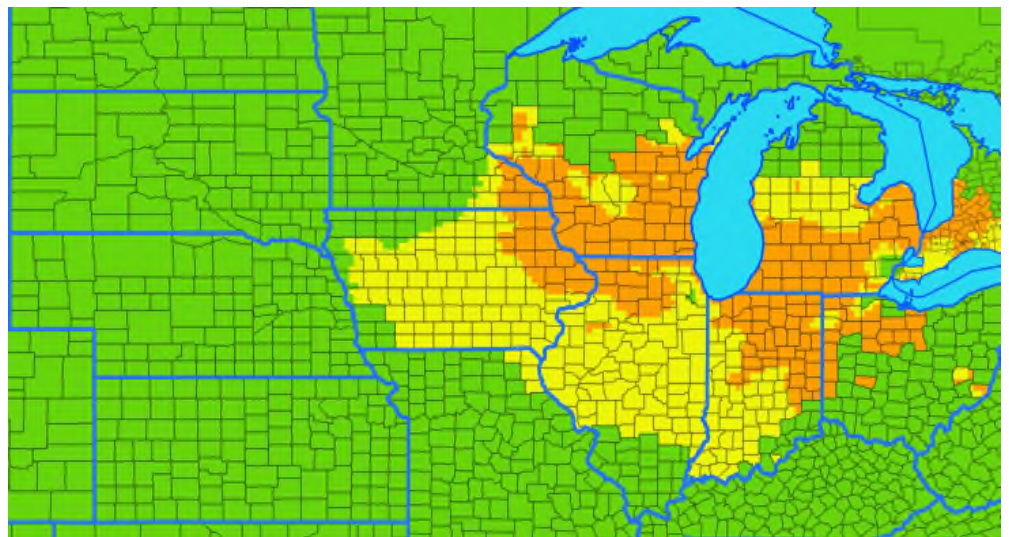
Weather conditions are moderately or highly favorable for tar spot infections. Scout fields with a history of the disease. In orange or yellow areas spray if the disease is detected in fields in the area. Infections during this period lead to establishment of the disease for late summer damage.



ONE-MONTH RISK MAP

### WHAT TO DO?

<b>HIGH</b>	Treat at the first sign of infection in your fields or the disease is developing in neighboring fields
<b>MODERATE</b>	Scout fields and treat as conditions warrant
<b>LOW OR VERY LOW</b>	Monitor risk forecasts



Risk Level



Very-low Low Moderate High

**DISCLAIMER**

The forecast herein is made with state of the art computer modeling technology. However, the models do not guarantee accuracy or certainty of information because of the uncertainty in climate forecast which is used in disease modeling and because of environmental variation. We specifically disclaim all warranties expressed or implied with respect to the use of this information. . **ALWAYS READ AND FOLLOW PESTICIDE LABEL DIRECTIONS.** Bayer, Bayer Cross and Delaro<sup>®</sup> are registered trademarks of Bayer Group. For additional product information call toll-free 1-866-99-BAYER (1-866-992-2937) or visit our website at [www.BayerCropScience.us](http://www.BayerCropScience.us). Bayer CropScience LP, 800 North Lindbergh Boulevard, St. Louis, MO 63167. ©2020 Bayer Group. All rights reserved.



**RESTRICTED**