



**DELARO<sup>®</sup>**  
*Complete*  
 458 SC Fungicide

## Corn Gray Leaf Spot Risk Forecast

For period of July 17 – Aug 15, Date of Issue: July 18, 2021

### One-Month Weather Outlook

Over the next 30 days areas north of I-80 will see warmer than normal temperatures, while south of I-80 temperatures will be in the normal range. Normal rainfall is expected except in the Ohio River Valley with higher than normal precipitation predicted. During the next two weeks temperatures will be above average for the entire Corn Belt. Precipitation will be below normal west of the Mississippi River and normal or higher east of the River.

### Gray Leaf Spot Risk Summary

The risk for gray leaf spot in the Corn Belt is at similar level of previous forecasts.

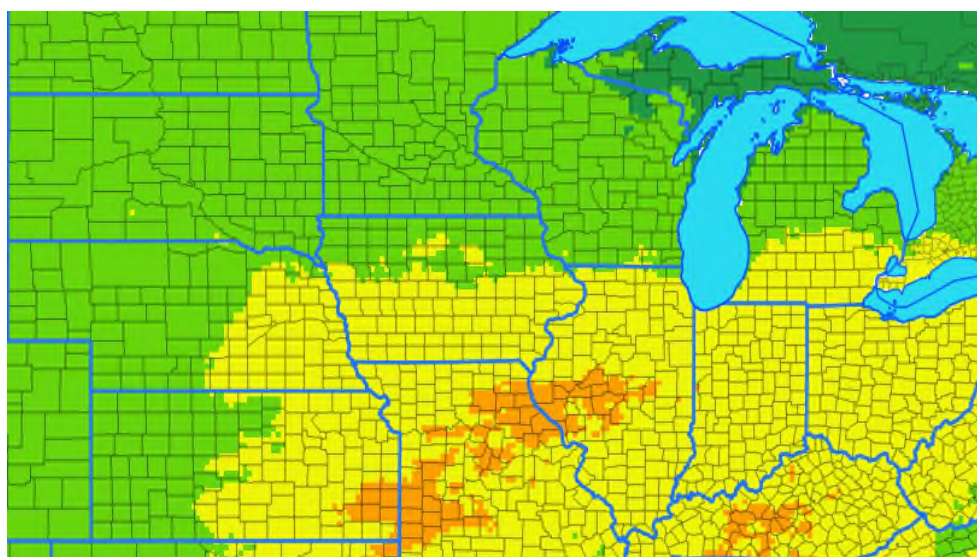
### Next two-week risk interpretation

Weather conditions are moderately favorable to GLS in areas south of US Hwy 3 for the next two weeks with some areas at high risk. Consider spraying susceptible hybrids in at-risk areas. When scouting, consider treatment if GLS is found on the ear leaf or higher. Corn-corn ground or no-till is at higher risk than indicated.



### ONE-MONTH RISK MAP

WHAT TO DO?	
<b>HIGH</b>	Treat susceptible hybrids and weigh risk factors for other fields
<b>MODERATE</b>	Scout fields and treat as conditions warrant
<b>LOW OR VERY LOW</b>	Monitor risk forecasts



Risk Level

Very-low Low Moderate High

#### DISCLAIMER

The forecast herein is made with state of the art computer modeling technology. However, the models do not guarantee accuracy or certainty of information because of the uncertainty in climate forecast which is used in disease modeling and because of environmental variation. We specifically disclaim all warranties expressed or implied with respect to the use of this information. **ALWAYS READ AND FOLLOW PESTICIDE LABEL DIRECTIONS.** Bayer, Bayer Cross and Delaro<sup>®</sup> are registered trademarks of Bayer Group. For additional product information call toll-free 1-866-99-BAYER (1-866-992-2937) or visit our website at [www.BayerCropScience.us](http://www.BayerCropScience.us). Bayer CropScience LP, 800 North Lindbergh Boulevard, St. Louis, MO 63167. ©2020 Bayer Group. All rights reserved.



**RESTRICTED**





**DELARO**<sup>®</sup>  
Complete  
458 SC Fungicide

## Northern Corn Leaf Blight Risk Forecast

For period of July 17 – Aug 15, Date of Issue: July 18, 2021

### One-Month Weather Outlook

Over the next 30 days areas north of I-80 will see warmer than normal temperatures, while south of I-80 temperatures will be in the normal range. Normal rainfall is expected except in the Ohio River Valley with higher than normal precipitation predicted. During the next two weeks temperatures will be above average for the entire Corn Belt. Precipitation will be below normal west of the Mississippi River and normal or higher east of the River.

### Northern Leaf Blight Risk Summary

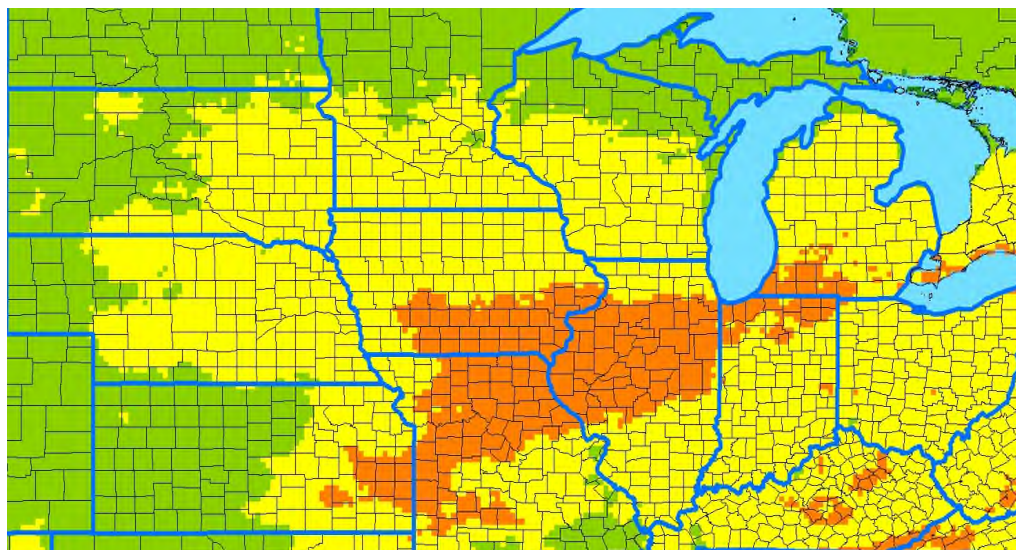
The risk of northern corn leaf blight continues to increase in the central Corn Belt.

### Next two-week risk interpretation

Conditions are increasingly favorable to NCLB in the Corn Belt. In areas of orange, consider spraying susceptible hybrids. In areas of yellow, consider spraying when NCLB is detected on susceptible hybrids in the middle of the canopy or higher. Late-planted corn has higher risk than indicated on the map.



### ONE-MONTH RISK MAP



### WHAT TO DO?

<b>HIGH</b>	Treat susceptible hybrids and weigh risk factors for other fields
<b>MODERATE</b>	Scout fields and treat as conditions warrant
<b>LOW OR VERY LOW</b>	Monitor risk forecasts

### Risk Level



### DISCLAIMER

The forecast herein is made with state of the art computer modeling technology. However, the models do not guarantee accuracy or certainty of information because of the uncertainty in climate forecast which is used in disease modeling and because of environmental variation. We specifically disclaim all warranties expressed or implied with respect to the use of this information. **ALWAYS READ AND FOLLOW PESTICIDE LABEL DIRECTIONS.** Bayer, Bayer Cross and Delaro<sup>®</sup> are registered trademarks of Bayer Group. For additional product information call toll-free 1-866-99-BAYER (1-866-992-2937) or visit our website at [www.BayerCropScience.us](http://www.BayerCropScience.us). Bayer CropScience LP, 800 North Lindbergh Boulevard, St. Louis, MO 63167. ©2020 Bayer Group. All rights reserved.



**RESTRICTED**





**DELARO<sup>®</sup>**  
*Complete*  
 458 SC Fungicide

## Corn Southern Rust Risk Forecast

For period of July 17 – Aug 15, Date of Issue: July 18, 2021

### One-Month Weather Outlook

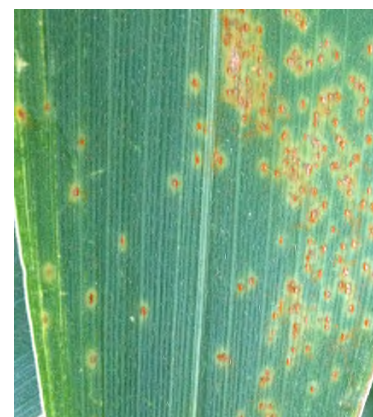
Over the next 30 days areas north of I-80 will see warmer than normal temperatures, while south of I-80 temperatures will be in the normal range. Normal rainfall is expected except in the Ohio River Valley with higher than normal precipitation predicted. During the next two weeks temperatures will be above average for the entire Corn Belt. Precipitation will be below normal west of the Mississippi River and normal or higher east of the River.

### Southern Rust Risk Summary

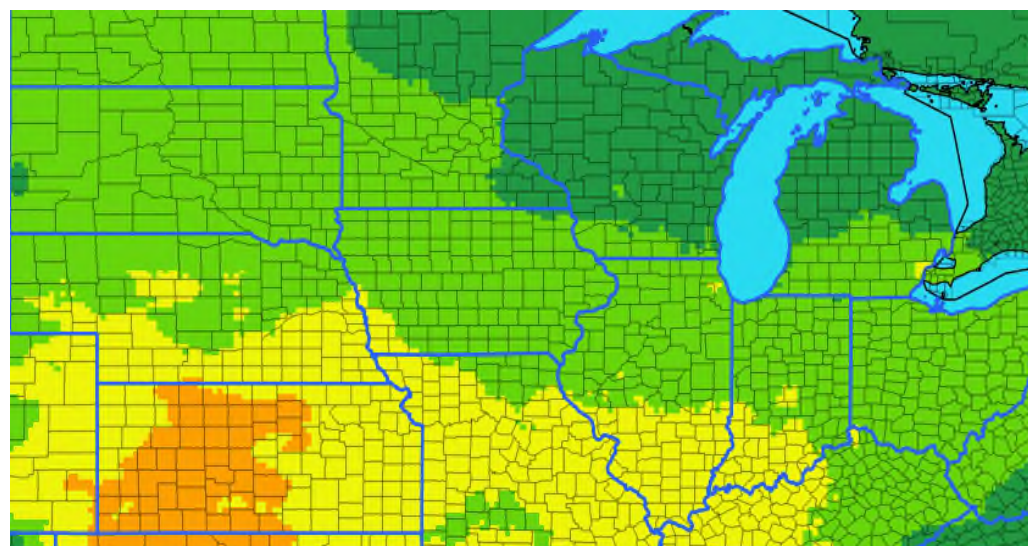
The risk of southern corn rust is moderate to high in southwestern areas.

### Next 2-week risk interpretation

More diseased plants will be found in areas of yellow or orange due to favorable or moderately favorable weather conditions. Treat corn fields where the disease has been identified or if southern rust has been reported nearby. Late-planted corns in yellow areas are at higher than moderate risk.



### ONE-MONTH RISK MAP



Risk Level



### WHAT TO DO?

<b>HIGH</b>	Treat susceptible hybrids and weigh risk factors for other fields
<b>MODERATE</b>	Scout fields and treat as conditions warrant
<b>LOW OR VERY LOW</b>	Monitor risk forecasts

#### DISCLAIMER

The forecast herein is made with state of the art computer modeling technology. However, the models do not guarantee accuracy or certainty of information because of the uncertainty in climate forecast which is used in disease modeling and because of environmental variation. We specifically disclaim all warranties expressed or implied with respect to the use of this information. **ALWAYS READ AND FOLLOW PESTICIDE LABEL DIRECTIONS.** Bayer, Bayer Cross and Delaro<sup>®</sup> are registered trademarks of Bayer Group. For additional product information call toll-free 1-866-99-BAYER (1-866-992-2937) or visit our website at [www.BayerCropScience.us](http://www.BayerCropScience.us). Bayer CropScience LP, 800 North Lindbergh Boulevard, St. Louis, MO 63167. ©2020 Bayer Group. All rights reserved.



**RESTRICTED**





**DELARO<sup>®</sup>**  
*Complete*  
 458 SC Fungicide

## Corn Common Rust Risk Forecast

For period of July 17 – Aug 15, Date of Issue: July 18, 2021

### One-Month Weather Outlook

Over the next 30 days areas north of I-80 will see warmer than normal temperatures, while south of I-80 temperatures will be in the normal range. Normal rainfall is expected except in the Ohio River Valley with higher than normal precipitation predicted. During the next two weeks temperatures will be above average for the entire Corn Belt. Precipitation will be below normal west of the Mississippi River and normal or higher east of the River.

### Common Rust Risk Summary

The risk of corn common rust is increasing for susceptible hybrids.

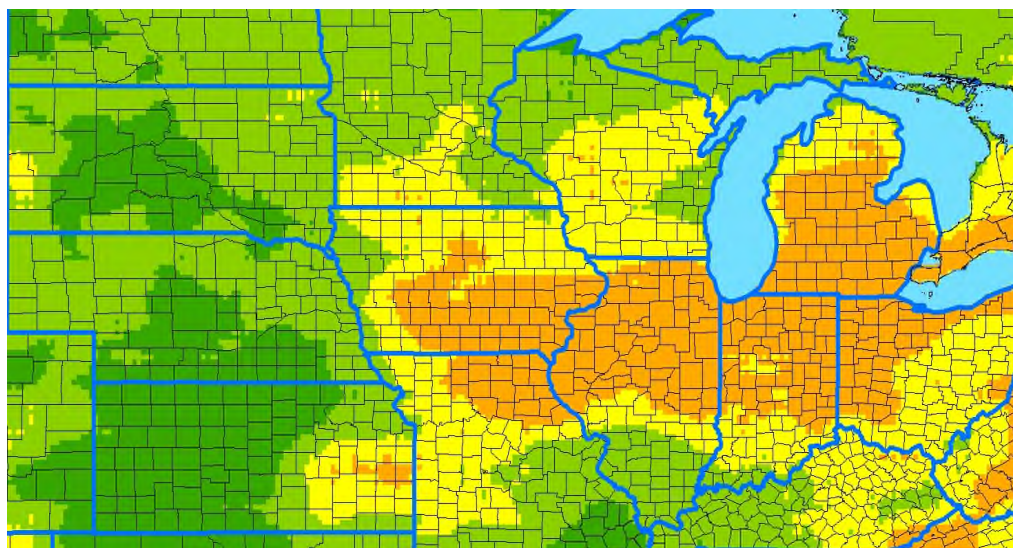
### Risk interpretation

Although most hybrids in the Corn Belt are resistant to common rust, weather conditions will become more favorable during the next two weeks, increasing the risk for susceptible hybrids. In areas of orange, consider spraying susceptible hybrids if disease is detected on the middle or upper portions of the plants.



### ONE-MONTH RISK MAP

WHAT TO DO?	
<b>HIGH</b>	Treat susceptible hybrids and weigh risk factors for other fields
<b>MODERATE</b>	Scout fields and treat as conditions warrant
<b>LOW OR VERY LOW</b>	Monitor risk forecasts



Risk Level



#### DISCLAIMER

The forecast herein is made with state of the art computer modeling technology. However, the models do not guarantee accuracy or certainty of information because of the uncertainty in climate forecast which is used in disease modeling and because of environmental variation. We specifically disclaim all warranties expressed or implied with respect to the use of this information. **ALWAYS READ AND FOLLOW PESTICIDE LABEL DIRECTIONS.** Bayer, Bayer Cross and Delaro<sup>®</sup> are registered trademarks of Bayer Group. For additional product information call toll-free 1-866-99-BAYER (1-866-992-2937) or visit our website at [www.BayerCropScience.us](http://www.BayerCropScience.us). Bayer CropScience LP, 800 North Lindbergh Boulevard, St. Louis, MO 63167. ©2020 Bayer Group. All rights reserved.



**RESTRICTED**





**DELARO<sup>®</sup>**  
*Complete*  
 458 SC Fungicide

## Corn Tar Spot Risk Forecast

For period of July 17 – Aug 15, Date of Issue: July 18, 2021

### One-Month Weather Outlook

Over the next 30 days areas north of I-80 will see warmer than normal temperatures, while south of I-80 temperatures will be in the normal range. Normal rainfall is expected except in the Ohio River Valley with higher than normal precipitation predicted. During the next two weeks temperatures will be above average for the entire Corn Belt. Precipitation will be below normal west of the Mississippi River and normal or higher east of the River.

### Corn Tar Spot Risk Summary

The risk of corn tar spot in the Corn Belt is at similar levels to the previous forecast.

### Next two-week risk interpretation

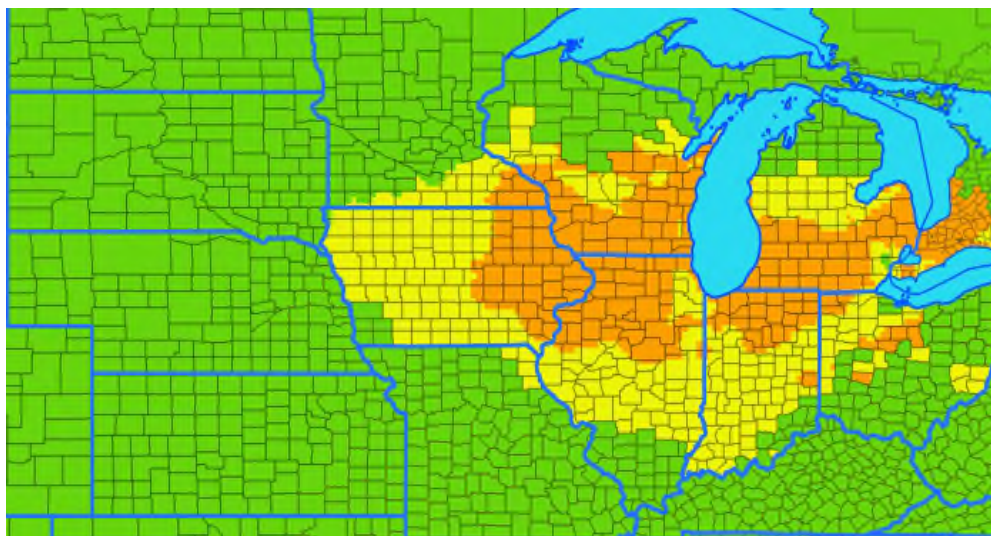
Weather conditions are moderately or highly favorable to tar spot infections in areas where the disease was reported in previous years. In areas of orange, consider spraying if the disease is detected. In areas of yellow, scout for the black ascomata, especially in corn-on-corn fields.



ONE-MONTH RISK MAP

### WHAT TO DO?

<b>HIGH</b>	Treat at the first sign of infection in your fields or the disease is developing in neighboring fields
<b>MODERATE</b>	Scout fields and treat as conditions warrant
<b>LOW OR VERY LOW</b>	Monitor risk forecasts



Risk Level



#### DISCLAIMER

The forecast herein is made with state of the art computer modeling technology. However, the models do not guarantee accuracy or certainty of information because of the uncertainty in climate forecast which is used in disease modeling and because of environmental variation. We specifically disclaim all warranties expressed or implied with respect to the use of this information. **ALWAYS READ AND FOLLOW PESTICIDE LABEL DIRECTIONS.** Bayer, Bayer Cross and Delaro<sup>®</sup> are registered trademarks of Bayer Group. For additional product information call toll-free 1-866-99-BAYER (1-866-992-2937) or visit our website at [www.BayerCropScience.us](http://www.BayerCropScience.us). Bayer CropScience LP, 800 North Lindbergh Boulevard, St. Louis, MO 63167. ©2020 Bayer Group. All rights reserved.



**RESTRICTED**