



DELARO[®]
Complete
 458 SC Fungicide

Corn Gray Leaf Spot Risk Forecast

For period of July 24 – Aug 22, Date of Issue: July 25 2021

One-Month Weather Outlook

Over the next 30 days temperatures across the Corn Belt will range from average to above average. Precipitation will range from drier than normal in the western areas to above normal in the eastern areas. During the next two weeks areas west of the Mississippi River will be warmer and drier than normal, while normal temperatures with higher than normal precipitation are predicted for the eastern areas.

Gray Leaf Spot Risk Summary

The risk for gray leaf spot is high in parts of IL, MO, KY and KS.

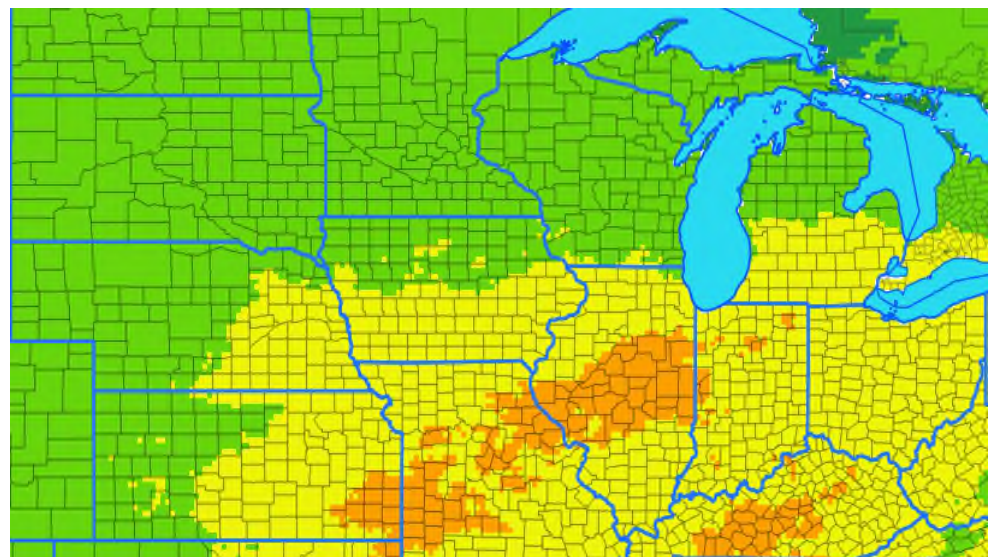
Next two-week risk interpretation

Weather conditions are moderately to highly favorable for GLS in areas south of US Hwy 3. In area of high risk (orange), consider treating susceptible hybrids. In areas of yellow, scout. Lesions may be found in the middle canopy. Corn-on-corn ground or no-till is at higher risk than indicated on the map.



ONE-MONTH RISK MAP

WHAT TO DO?	
HIGH	Treat susceptible hybrids and weigh risk factors for other fields
MODERATE	Scout fields and treat as conditions warrant
LOW OR VERY LOW	Monitor risk forecasts



Risk Level



DISCLAIMER

The forecast herein is made with state of the art computer modeling technology. However, the models do not guarantee accuracy or certainty of information because of the uncertainty in climate forecast which is used in disease modeling and because of environmental variation. We specifically disclaim all warranties expressed or implied with respect to the use of this information. **ALWAYS READ AND FOLLOW PESTICIDE LABEL DIRECTIONS.** Bayer, Bayer Cross and Delaro[®] are registered trademarks of Bayer Group. For additional product information call toll-free 1-866-99-BAYER (1-866-992-2937) or visit our website at www.BayerCropScience.us. Bayer CropScience LP, 800 North Lindbergh Boulevard, St. Louis, MO 63167. ©2020 Bayer Group. All rights reserved.



RESTRICTED



DELARO[®]
Complete
 458 SC Fungicide

Northern Corn Leaf Blight Risk Forecast

For period of July 24 – Aug 22, Date of Issue: July 25 2021

One-Month Weather Outlook

Over the next 30 days temperatures across the Corn Belt will range from average to above average. Precipitation will range from drier than normal in the western areas to above normal in the eastern areas. During the next two weeks areas west of the Mississippi River will be warmer and drier than normal, while normal temperatures with higher than normal precipitation are predicted for the eastern areas.

Northern Leaf Blight Risk Summary

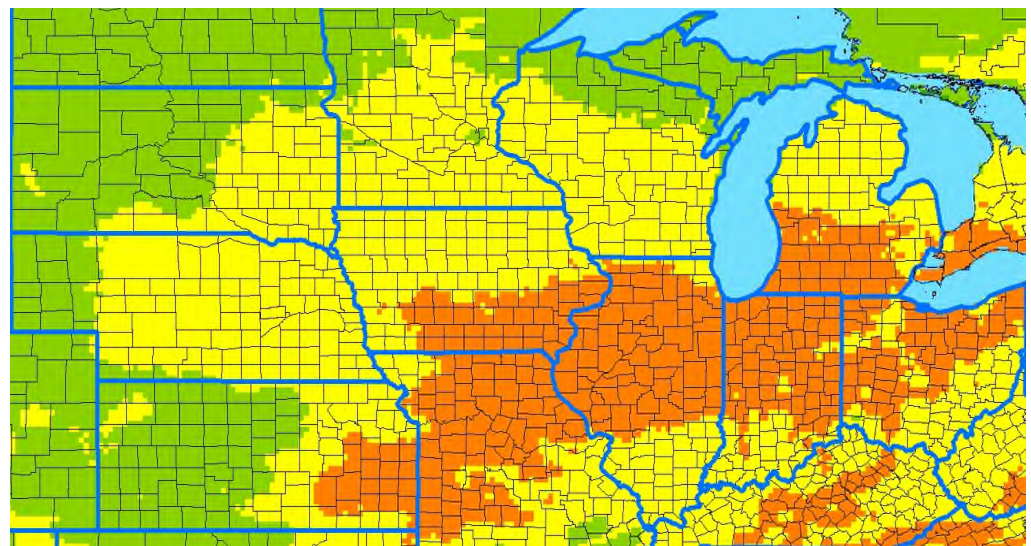
The risk of northern corn leaf blight continues to increase in the central Corn Belt.

Next two-week risk interpretation

Conditions are favorable or moderately favorable to NCLB in the Corn Belt. In areas of orange, consider treating susceptible hybrids, especially fields that had NCLB previously. In areas of yellow, consider spraying when NCLB is detected on middle leaves or higher. Late-planted corn is at higher risk.



ONE-MONTH RISK MAP



Risk Level



WHAT TO DO?	
HIGH	Treat susceptible hybrids and weigh risk factors for other fields
MODERATE	Scout fields and treat as conditions warrant
LOW OR VERY LOW	Monitor risk forecasts

DISCLAIMER

The forecast herein is made with state of the art computer modeling technology. However, the models do not guarantee accuracy or certainty of information because of the uncertainty in climate forecast which is used in disease modeling and because of environmental variation. We specifically disclaim all warranties expressed or implied with respect to the use of this information. . **ALWAYS READ AND FOLLOW PESTICIDE LABEL DIRECTIONS.** Bayer, Bayer Cross and Delaro[®] are registered trademarks of Bayer Group. For additional product information call toll-free 1-866-99-BAYER (1-866-992-2937) or visit our website at www.BayerCropScience.us. Bayer CropScience LP, 800 North Lindbergh Boulevard, St. Louis, MO 63167. ©2020 Bayer Group. All rights reserved.



RESTRICTED



DELARO[®]
Complete
 458 SC Fungicide

Corn Southern Rust Risk Forecast

For period of July 24 – Aug 22, Date of Issue: July 25 2021

One-Month Weather Outlook

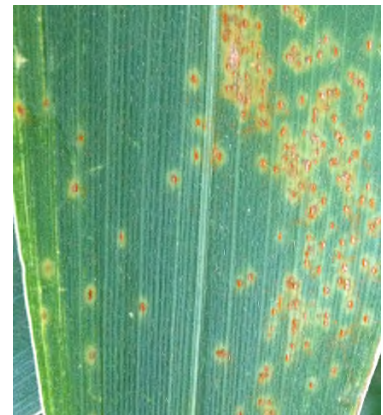
Over the next 30 days temperatures across the Corn Belt will range from average to above average. Precipitation will range from drier than normal in the western areas to above normal in the eastern areas. During the next two weeks areas west of the Mississippi River will be warmer and drier than normal, while normal temperatures with higher than normal precipitation are predicted for the eastern areas.

Southern Rust Risk Summary

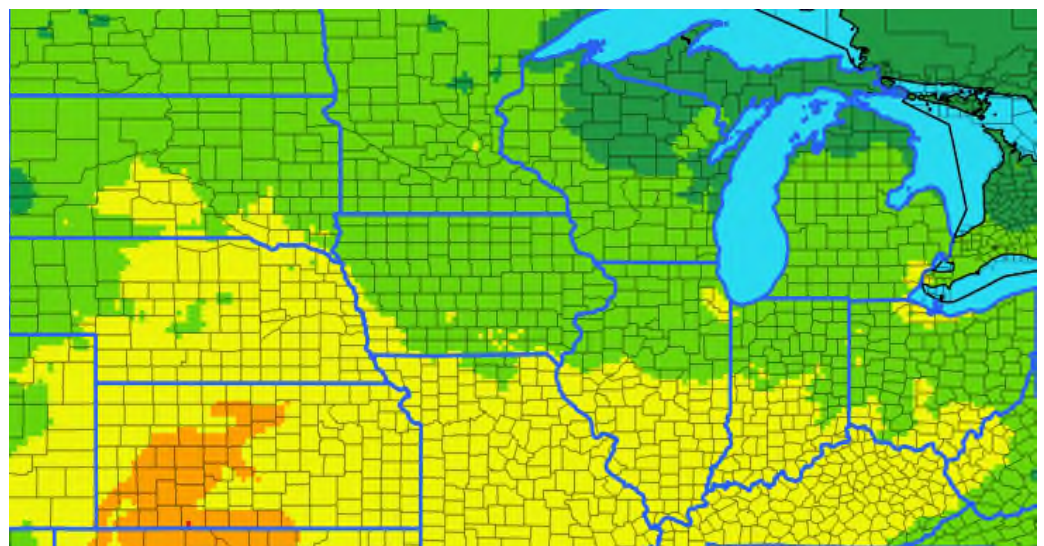
The risk of southern corn rust is moderate for the southern half of the Corn Belt.

Next 2-week risk interpretation

Conditions are moderately favorable for the southern areas of the Corn Belt and more diseased plants have been found there. For at-risk areas treat if southern rust is found or reported nearby. Late-planted corn in yellow areas is at higher risk.



ONE-MONTH RISK MAP



Risk Level



Very-low Low Moderate High

WHAT TO DO?	
HIGH	Treat susceptible hybrids and weigh risk factors for other fields
MODERATE	Scout fields and treat as conditions warrant
LOW OR VERY LOW	Monitor risk forecasts

DISCLAIMER

The forecast herein is made with state of the art computer modeling technology. However, the models do not guarantee accuracy or certainty of information because of the uncertainty in climate forecast which is used in disease modeling and because of environmental variation. We specifically disclaim all warranties expressed or implied with respect to the use of this information. **ALWAYS READ AND FOLLOW PESTICIDE LABEL DIRECTIONS.** Bayer, Bayer Cross and Delaro[®] are registered trademarks of Bayer Group. For additional product information call toll-free 1-866-99-BAYER (1-866-992-2937) or visit our website at www.BayerCropScience.us. Bayer CropScience LP, 800 North Lindbergh Boulevard, St. Louis, MO 63167. ©2020 Bayer Group. All rights reserved.



RESTRICTED



DELARO[®]
Complete
 458 SC Fungicide

Corn Common Rust Risk Forecast

For period of July 24 – Aug 22, Date of Issue: July 25 2021

One-Month Weather Outlook

Over the next 30 days temperatures across the Corn Belt will range from average to above average. Precipitation will range from drier than normal in the western areas to above normal in the eastern areas. During the next two weeks areas west of the Mississippi River will be warmer and drier than normal, while normal temperatures with higher than normal precipitation are predicted for the eastern areas.

Common Rust Risk Summary

The risk of corn common rust remains at similar levels to the previous forecast.

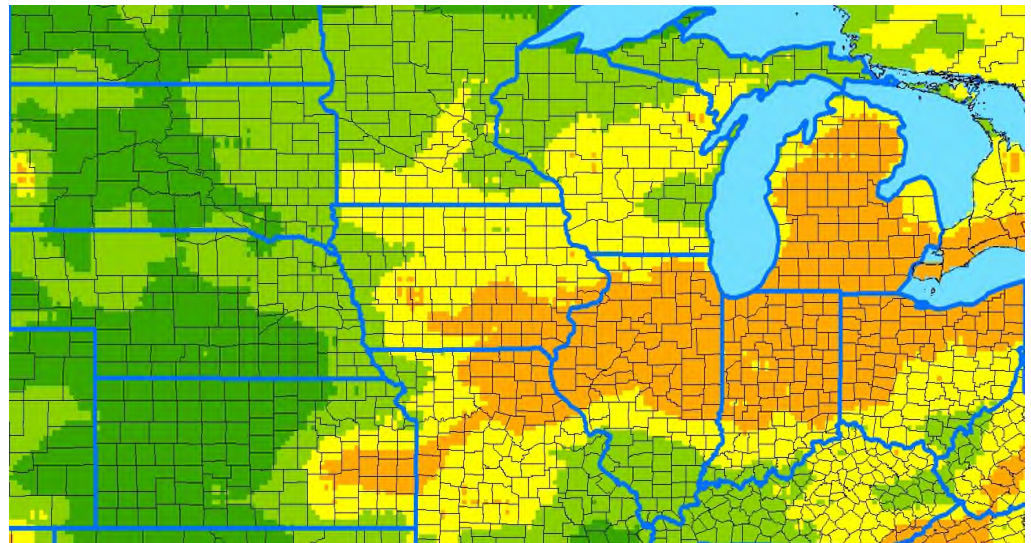
Risk interpretation

Although most hybrids are resistant to common rust, weather conditions are favorable to this disease in the eastern Corn Belt for the next two weeks. In at-risk areas spray susceptible hybrids if disease is detected on the middle or upper leaves of the plants.



ONE-MONTH RISK MAP

WHAT TO DO?	
HIGH	Treat susceptible hybrids and weigh risk factors for other fields
MODERATE	Scout fields and treat as conditions warrant
LOW OR VERY LOW	Monitor risk forecasts



Risk Level



DISCLAIMER

The forecast herein is made with state of the art computer modeling technology. However, the models do not guarantee accuracy or certainty of information because of the uncertainty in climate forecast which is used in disease modeling and because of environmental variation. We specifically disclaim all warranties expressed or implied with respect to the use of this information. **ALWAYS READ AND FOLLOW PESTICIDE LABEL DIRECTIONS.** Bayer, Bayer Cross and Delaro[®] are registered trademarks of Bayer Group. For additional product information call toll-free 1-866-99-BAYER (1-866-992-2937) or visit our website at www.BayerCropScience.us. Bayer CropScience LP, 800 North Lindbergh Boulevard, St. Louis, MO 63167. ©2020 Bayer Group. All rights reserved.



RESTRICTED



DELARO[®]
Complete
 458 SC Fungicide

Corn Tar Spot Risk Forecast

For period of July 24 – Aug 22, Date of Issue: July 25 2021

One-Month Weather Outlook

Over the next 30 days temperatures across the Corn Belt will range from average to above average. Precipitation will range from drier than normal in the western areas to above normal in the eastern areas. During the next two weeks areas west of the Mississippi River will be warmer and drier than normal, while normal temperatures with higher than normal precipitation are predicted for the eastern areas.

Corn Tar Spot Risk Summary

In areas where tar spot has been observed in the past, the risk is high in the east and moderate in the west.

Next two-week risk interpretation

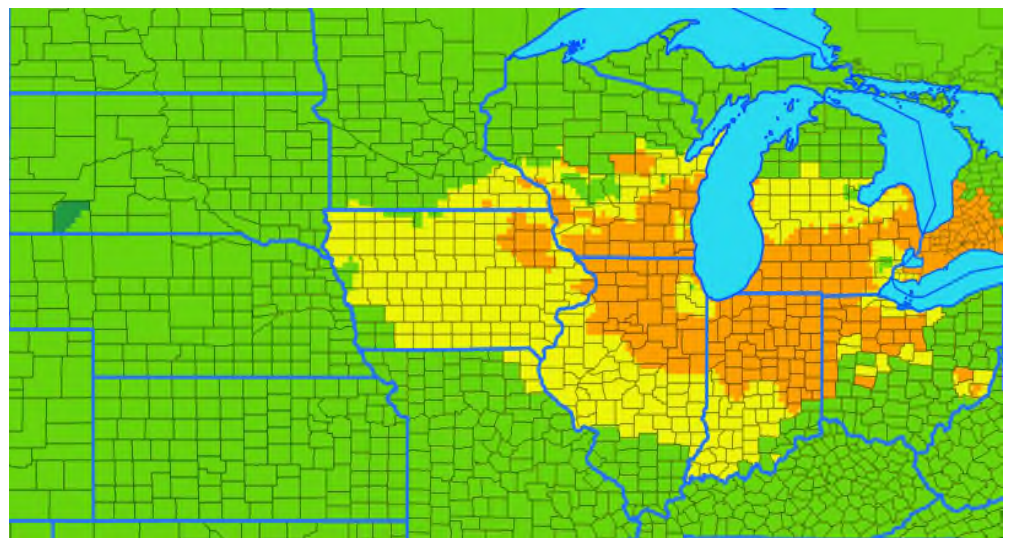
Weather conditions remains highly favorable for tar spot infections east of the Mississippi River. In areas of orange, consider spraying if the disease is detected in or around the corn fields, especially for corn-following-corn acres.



ONE-MONTH RISK MAP

WHAT TO DO?

HIGH	Treat at the first sign of infection in your fields or the disease is developing in neighboring fields
MODERATE	Scout fields and treat as conditions warrant
LOW OR VERY LOW	Monitor risk forecasts



Risk Level



DISCLAIMER

The forecast herein is made with state of the art computer modeling technology. However, the models do not guarantee accuracy or certainty of information because of the uncertainty in climate forecast which is used in disease modeling and because of environmental variation. We specifically disclaim all warranties expressed or implied with respect to the use of this information. . **ALWAYS READ AND FOLLOW PESTICIDE LABEL DIRECTIONS.** Bayer, Bayer Cross and Delaro[®] are registered trademarks of Bayer Group. For additional product information call toll-free 1-866-99-BAYER (1-866-992-2937) or visit our website at www.BayerCropScience.us. Bayer CropScience LP, 800 North Lindbergh Boulevard, St. Louis, MO 63167. ©2020 Bayer Group. All rights reserved.



RESTRICTED