

Weed Calendar for the Corn Belt

The differences in emergence characteristics of weed species are one of the reasons why weed management is such a difficult task. Knowing when weeds emerge can help improve weed management systems by increasing scouting efficiency and help determine optimum weed control tactic timing (seedbed prep, herbicide application, cultivation, etc).

Table 1. Weed emergence sequence of common troublesome annual weed species in the corn growing region.

Herbicide Application Timing & Weed Emergence										
Winter Annual		Burndown/ Preplant		Postemergence				Fall Applied		
Common Name	Latin Name	March	April	May	June	July	August	September	October	November
Annual bluegrass	<i>Poa annua</i>									
Downy brome	<i>Bromus tectorum</i>									
Wild mustard	<i>Brassica kaber</i>									
Field pennycress	<i>Thlaspi arvense</i>									
Shepherd's purse	<i>Lolium perenne L. ssp. multiflorum</i>									
Horseweed (marestail)	<i>Conyza canadensis</i>	****	****	****				****	****	****
Purple deadnettle	<i>Lamium purpureum</i>									
Wild carrot	<i>Daucus carota</i>									
Henbit	<i>Lamium amplexicaule</i>									

	Early Season Emergence		Season - Long Emergence
****	Winter annual life cycle pattern		

Weed Calendar for the Corn Belt

Herbicide Application Timing & Weed Emergence										
Summer Annual Broadleaves		Burndown/ Preplant		Postemergence				Fall Applied		
Common Name	Latin Name	March	April	May	June	July	August	September	October	November
Common lambsquarters	<i>Chenopodium album</i>									
Eastern black nightshade	<i>Solanum ptycanthum</i>									
Pennsylvania smartweed	<i>Polygonum pensylvanicum</i>									
Palmer amaranth	<i>Amaranthus palmeri</i>			• • • •	• • • •	• • • •	• • • •	• • • •		
Morningglory spp.	<i>Ipomoea spp.</i>			• • • •	• • • •	• • • •	• • • •	• • • •		
Common ragweed	<i>Ambrosia artemisiifolia</i>									
Giant ragweed	<i>Ambrosia trifida</i>									
Redroot pigweed	<i>Amaranthus retroflexus</i>			• • • •	• • • •	• • • •				
Velvetleaf	<i>Abutilon theophrasti</i>		• • • •	• • • •	• • • •	• • • •				
Common waterhemp	<i>Amaranthus tuberculatus</i>			• • • •	• • • •	• • • •	• • • •	• • • •		

Early Season Emergence
 • • • • Early - Mid Season Emergence
 Extended Diapause Giant Ragweed Emergence

Herbicide Application Timing & Weed Emergence										
Summer Annual Grass		Burndown/ Preplant		Postemergence				Fall Applied		
Common Name	Latin Name	March	April	May	June	July	August	September	October	November
Large crabgrass	<i>Digitaria sanguinalis</i>		• • • •	• • • •	• • • •	• • • •				
Wooly cupgrass	<i>Eriochloa villosa</i>		• • • •	• • • •	• • • •	• • • •				
Barnyardgrass	<i>Echinochloa crus-galli</i>			• • • •	• • • •	• • • •				
Green foxtail	<i>Setaria viridis</i>		• • • •	• • • •	• • • •	• • • •				
Giant foxtail	<i>Setaria faberi</i>		• • • •	• • • •	• • • •	• • • •				
Yellow foxtail	<i>Setaria glauca</i>		• • • •	• • • •	• • • •	• • • •				
Goosegrass	<i>Eleusine indica</i>	• • • •	• • • •	• • • •	• • • •	• • • •	• • • •			
Fall panicum	<i>Panicum dichotomiflorum</i>			• • • •	• • • •	• • • •	• • • •			

• • • • Early - Mid Season Emergence



Weed Calendar for the Corn Belt

Identification

Grasses



Annual bluegrass.

Photo courtesy of Shawn Wright, University of Kentucky, Bugwood.org.



Downy brome.



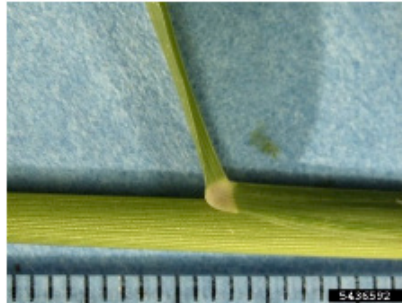
Large crabgrass collar region, left, and seedhead, right.

Photos courtesy of Steven Gower.



Woolly cupgrass.

Photo courtesy of Bruce Ackley, The Ohio State University, Bugwood.org.



Barnyardgrass.

Photos courtesy of Bruce Ackley, The Ohio State University and Howard F Schwartz, Colorado State University, Bugwood.org.



Green foxtail.

Photo courtesy of Bruce Ackley, The Ohio State University, Bugwood.org.



Giant foxtail.

Photo courtesy of John D. Byrd, Mississippi State University, Bugwood.org.



Yellow foxtail.

Photo courtesy of Howard F. Schwartz, Colorado State University, Bugwood.org.

Weed Calendar for the Corn Belt



Goosegrass.

Photo courtesy of John D. Byrd, Mississippi State University, Bugwood.org.



Fall panicum.

Broadleaves



Horseweed (maretail).



Wild mustard.

Photo courtesy of Steven Gower.



Shepherd's purse.

Photo courtesy of Steven Gower.



Horseweed (maretail).



Wild mustard.

Photo courtesy of Steven Gower.



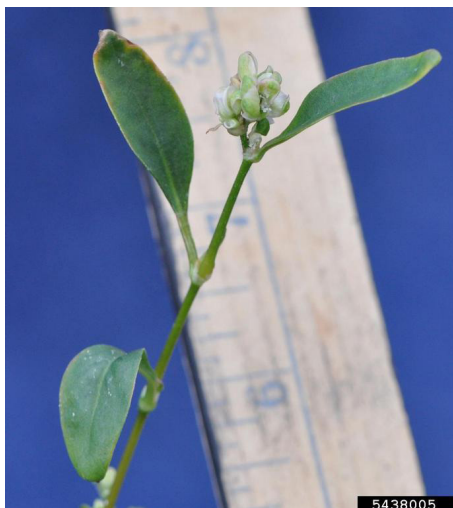
Shepherd's purse.

Photo courtesy of Steven Gower.

Weed Calendar for the Corn Belt



Eastern black nightshade.



Pennsylvania smartweed.

Photo courtesy of Bruce Ackley, The Ohio State University, Bugwood.org.



Palmer amaranth.

Photos courtesy of Stephen Gower.



Common waterhemp seedlings (left) and stem (right).

Seedlings photo on left courtesy of Stephen Gower.



Morningglory species (ivy leaf morningglory pictured).

Photo courtesy of Stephen Gower.

Weed Calendar for the Corn Belt



Common ragweed.



Giant ragweed.

Photo courtesy of Steven Gower.



Redroot pigweed.

Photo courtesy of Stephen Gower.



Velvetleaf.

Sources

Aneson, N., Striegel, S. and Werle, R. Giant ragweed. Grow IWM. <http://growiwm.org>.

Bradley K. 2018. Morning glory management in soybean. Take Action Herbicide Resistance Management. <http://iwilltakeaction.com>.

Curran, W.S. and Klodd, A. 2014. Invasive pigweeds: Palmer amaranth and waterhemp. Penn State Extension. <http://extension.psu.edu>.

Doll, J.D. 2001. Knowing when to look for what: Weed emergence and flowering sequences in Wisconsin. Department of Agronomy. UW-Madison Wisconsin. <http://extension.soils.wisc.edu>.

Hartzler, R.G. 2008. Relative emergence sequence for weeds of corn and soybean. Iowa State University. <http://www.extension.iastate.edu/>.

Pittman, K. Horseweed. Grow IWM. <http://growiwm.org>.

Sprague, C. 2020. Palmer amaranth management in soybeans. Take Action Herbicide Resistance Management. <http://iwilltakeaction.com>.

Steckel, L. 2019. Barnyardgrass management in soybeans. Take Action Herbicide Resistance Management. <http://iwilltakeaction.com>.

Legal Statements

ALWAYS READ AND FOLLOW PESTICIDE LABEL DIRECTIONS. Performance may vary, from location to location and from year to year, as local growing, soil and weather conditions may vary. Growers should evaluate data from multiple locations and years whenever possible and should consider the impacts of these conditions on the grower's fields.

All other trademarks are the property of their respective owners. ©2021 Bayer Group. All rights reserved. 1027_i1

